

GP MILAN TRAVEL GUIDE

by

Giovanni D'Amelio

Alberto Laurenzi



Summary

1.	<i>Easiest way to fly to Milan</i>	<i>pag. 3</i>
		...	
2.	<i>Tournament Venue</i>	<i>pag. 4</i>
		...	
3.	<i>Staff Hotel</i>	<i>pag. 6</i>
		
3.	<i>Hotels next to the Event Site</i>	<i>pag. 7</i>
		...	
4.	<i>General tips</i>	<i>pag. 8</i>
		...	
5.	<i>What to see in Milan</i>	<i>pag. 9</i>
		...	
6.	<i>What to see in Busto Arsizio</i>	<i>pag. 11</i>
		...	
7.	<i>The public transportation system</i>	<i>pag. 14</i>
		...	
8.	<i>Food and Drink!</i>	<i>pag. 16</i>
		...	
9.	<i>Local Game Stores</i>	<i>pag. 18</i>
		...	

EASIEST WAY TO FLY TO MILAN



1. Malpensa Airport (Milan)

Link: <http://www.milanomalpensa-airport.com/en>

Distance: 45 km

Transportation: Bus (Malpensashuttle €12,00) to Milan Central Station or Busto Arsizio (€3,50)

Malpensa Express train (www.malpensaexpress.it) connects the North Station and the Malpensa airport (40 min, every half hour) for €12,00. Early in the morning and in the evening the service is replaced by bus; the bus stop is on Via Paleocapa. The airport is also served by Malpensa Shuttle Bus (www.malpensa-shuttle.com), from Piazza Luigi di Savoia, in front of the Central Station. The taxi ride from Malpensa airport to the center of Milan is very expensive, so take into account other options before using it.

2. Linate Airport (Milan)

Link: <http://www.milanoline-airport.com/en>

Distance: 10 km

Transportation: Bus (ATM - urban transport) to Milan Central Station

Starfly line, subsidiary of motorway (www.autostradale.it), serves Linate Airport from Central Station; the ATM bus 73 goes back and forth every 15 minutes between the airport and Piazza San Babila (bus stop at the corner of Corso Europa). Finally, the taxi from Linate airport to Milan city center is quite convenient.

3. Orio al Serio (Bergamo)

Link: <http://www.sacbo.it/Airpor/portalProcess.jsp?languageID=2>

Distance: 50 km

Transportation: Bus (Orioshuttle €5,00, Autostradale €5,00, Terravision €5,00) to Milan Central Station

The Orioshuttle managed by motorway (www.autostradale.it) connects to the Central Station with Bergamo airport.

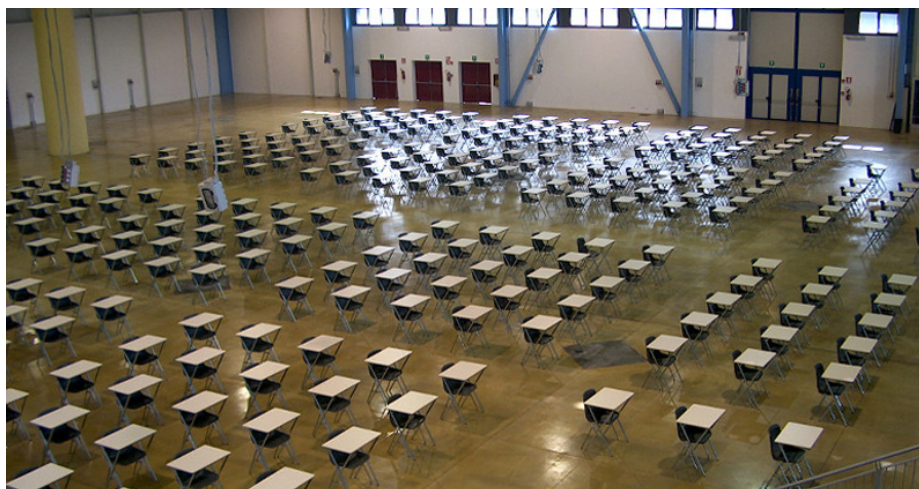
General Tips

For computerized information with flight details - just leaving - both airports you can call the telephone number 02 748 52 200, or visit the website www.sea-aeroportoimilano.it. An increasing number of low cost airlines use the airport of Orio al Serio, near Bergamo.

TOURNAMENT VENUE

- VENUE ADDRESS

Malpensa Fiere
Hall 3
Via XI Settembre, 16
Busto Arsizio Varese
Italy
www.malpensafiere.com



How to get to the venue:**By car:**

- MalpensaFiere is just 1 km from the Busto Arsizio exit off the A8 Milano-Varese motorway. The motorway network also provides convenient links with the following motorways: the A9 Milano-Como-Chiasso, the A4 Torino-Venezia and with the A26 Genova-Alessandria-Gravellona Toce.
Getting to MalpensaFiere: follow the A8 Milano-Varese motorway and take the Busto Arsizio exit. Follow the SS336 and take the Busto Arsizio-Cassano Magnago exit, then follow the signs for MalpensaFiere.
Journey time from the motorway exit: approximately 3 minutes.
The Trade Fair Centre has more than 1,400 car parking spaces.

By train :

- MalpensaFiere is approximately 2.5 km from Busto Arsizio city centre, where you will find two railway stations: Ferrovie dello Stato and Ferrovie Nord Milano (FNM). The Malpensa Express (from Malpensa Airport) stops at the FNM railway station in Busto Arsizio (€ 3,50); this is the train that also links Milano Cadorna railway station with Malpensa Airport.
The FFSS railway station in Busto Arsizio is approximately 3 km from MalpensaFiere
You can also buy the ticket on <http://www.malpensaexpress.it/>

By bus:

- The 11R line leaves from the square in front of the railway station. The bus stops at a roundabout which is 100 metres from MalpensaFiere (the bus stop is called S. Anna). Journey time: approximately 10 minutes.
Approx: €1,50

By taxi:

- A taxi service is available from the railway station.
Journey time: 5 minutes.
Radio Taxi: 0331/630090

STAFF HOTEL

Holiday Inn Express Milan Malpensa Airport

Distance to the event site: 10,6 Km;

number of rooms: 121;

Service: free WIFI;

- we arranged a room block for non-sponsored judges in the staff hotel: they can book a single room at €50/night or a twin room at €55/night. The exact details for booking will be announced very shortly (as we haven't received the booking code yet from the hotel)
- we arranged a shuttle service (free of charge for judges, payable for players). I updated this info earlier today on our website:

As we are aware that the venue is not that easy accessible by public transport, we organize a shuttle service between Malpensa Airport, the suggested hotel and the venue.

STOPS:

- Malpensa Airport (map with exact position will be posted soon)
- Malpensa Fiere
- Holiday Inn Express Milan Malpensa Airport

SHUTTLE SCHEDULE:

<u>Friday</u>	<u>Saturday</u>	<u>Sunday</u>
1 shuttle at 10h00	07:30 - 09:00 — shuttle every 10 minutes	07:30 - 11:00 — shuttle every 20 minutes
1 shuttle at 10h40	09:00 - 18:00 — shuttle every 40 minutes	11:00 - 15:30 — shuttles every 40 minutes
11:00 - 23:00 — shuttle every 20 minutes	18:00 - 23:30 — shuttle every 20 minutes	15:30 - 21:30 — shuttles every 20 minutes

RATES:

For a fixed fee of €12,50 you can use the shuttle service as much as you want during the entire weekend (first come-first served basis, so make sure to be there in time!).

You have to register online (www.tournamentcenter.eu) to get your weekend pass before Wednesday June 25, 12h00

HOTELS NEXT TO THE EVENT SITE

Unfortunately Busto Arsizio it is not a big city, and it is not a tourist town. So close to the location there are few hotels, here the list:

1. Hotel D 120

Distance to the event site: 800 meters, about 10 minutes by walk;

number of rooms: 73;

Service: free WIFI;

2. Hotel MO OM

Distance to the event site: 1500 meters, about 20 min by walk;

number of rooms: 144;

Service: free WIFI;

3. Hotel le Robinie

Distance to the event site: 1800 meters, about 22 min by walk;

number of rooms: 246;

Service: free WIFI;

Previous hotel are all so far from the center of the city but near from the location (Malpensa Fiere), if you have a car (now there are not available the bus timetables for the summer period) you can also consider this hotel because is inside the city center and close to many pubs and restaurants

4. Hotel Hortensia

Distance to the event site: 3000 meters;

number of rooms: 21;

Service: free WIFI;

GENERAL TIPS



International phone code: +39

Time zone: GMT +1

Safety: Milano is a safe place as every other big city :) Please remember always to take care of your wallet and phone in crowded places and on public transportation.

Emergency call: 112 (police), 118 (ambulance), 115 (fire)

Smoking: smoking is prohibited in public spaces (bars, restaurants, train stations, hotels, etc) but not outdoors or on reserved spots.

Tips and service: tips are never mandatory in Italy. If you are particularly happy for the service you received, you may leave a tip directly to the person who served you.

Money: you can use your euros freely. :) In Italy people usually have cash, but credit cards are accepted too (Visa everywhere, American Express seldom).

Electricity: current is at 230V and 50Hz, there are a couple of different plugs (type C and type L)

WHAT TO SEE IN MILAN

Milan is a city extraordinarily rich in churches, historical buildings, museums, and fortresses really worth visiting, and it sure takes more than one day to see it all. I have provided below a brief list of monuments one can't afford to miss upon the arrival to Milan.

The Duomo (the Cathedral)

Placed geometrically right in the centre of Milan, forming a stupendous vision with its structure and its decorations, the Duomo of Milan has become the symbol of the city itself. The top of the major spire is crowned with the famous gold plated copper statue of the Madonnina. The construction is entirely rose-white marble faced and is considered an excellent example of Gothic architecture. The decoration of the outside is due to 3400 among statues and splendid glass windows, while on the inside 52 suggestive pillars rise from the marble pavement, along with the outside walls



making the bearing structure of the building. This is the greatest Gothic architectural accomplishment in Italy, featuring the fusion of Nordic and Lombard elements. You can't miss the early Christian archeological excavations four meters under the level of the church parvis nor the way up to the terraces on the roof offering a breathtaking wide view over Milan, the spectacular octagonal body of the polygonal dome and in clear days the beautiful sights of the Alps.

Castello Sforzesco (Castle of the Sforzas, otherwise called Castle of the Door Giovia)



Being with the Duomo the dearest monument to the Milanese, the great Castle has represented for centuries a place where painful happenings have occurred, and has become to the eyes of citizens a hideous symbol of the power wielded by the Lords of Milan and by foreign dominators. Only during the XX century has it assumed the reassuring role of a cultural site, meant to keep the vestiges of the Lombard art. Its name brings to mind the XV Century, the era of Francesco Sforza who wanted to rebuilt it in 1450,

but the origins of the Castle are far more ancient: its beginnings go back, as a matter of fact, to the mid XIV century.

The Vittorio Emanuele Gallery

The Vittorio Emanuele Gallery is a covered passageway consisting of two wings that are perpendicular to the main axis and connecting Piazza della Scala, Piazza Duomo, Silvio Pellico Street, and Ugo Foscolo Street. Named after Vittorio Emanuele II, first king after Italy was united, the gallery was designed in an eclectic style, as to resume the attitude of the city in the second half of the XIX century. Nowadays there are lots of elegant shops to be found inside the gallery selling every kind of article you might think of, from high fashion to books, and diners from restaurant to cafés. The Gallery, along with Montenapoleone Street, and Della Spiga Street, is considered being one of the most fashionable places for people to go shopping in Milan and is one of most beautiful covered galleries in Europe.

Santa Maria delle Grazie and the Da Vinci's "Last Supper"

The Church of Santa Maria delle Grazie is both a Basilica and a sanctuary in Milan of the Dominican order. The architecture of the rostrum is one of the highest expressions of the Renaissance in northern Italy. Inside the XV century's refectory of the church of Santa Maria delle Grazie finds place Leonardo da Vinci's "Last Supper", one of the greatest masterpieces in the history of art of all times.



WHAT TO SEE IN BUSTO ARSIZIO

For those who have already been in Milan and wish to spend a quiet day without getting too far away from Busto Arsizio.

Although over the past centuries Busto Arsizio has basically been an industrial site, most amongst the admirable monuments which the city can number hold a religious significance. There are today twenty-five churches, three cemeteries and several chapels. The churches mostly reminded to the visitor are the Sanctuary of Saint Mary of Piazza (Santa Maria di Piazza), the Basilica of Saint John the Baptist (San Giovanni Battista) and the Provostal of Saint Michael the Archangel (San Michele Arcangelo).

As it has been for other cities around Italy and Europe, in Busto Arsizio the town square has had a fundamental role in bringing people together: the historical centre has got three main squares, the Saint Mary Square (Piazza Santa Maria), the Saint John Square (piazza San Giovanni) and the Vittorio Emanuele II Square.

And though the area the city has developed in is very densely populated, there is no lack of parks either outside the historical centre and in the outskirts all around.

Religious Architecture

"Squares are pre-eminently the places around which the western civilization was born and has gathered together".

In the beginning, the main squares inside the old town of Busto Arsizio were three: Piazza Santa Maria, the most important of all overlooked by the exquisite Basilica, Piazza San Giovanni Battista (upon which used to lie the ancient cemetery), and Piazza Vittorio Emanuele II.

In time, two others have joined, Church Square (Piazza della Chiesa) and Square Gallarini. These were the principal squares of the former towns of Sacconago and Borsano, no longer exercising self-government today.

After the industrial revolution, when the expansion of the city began and went far beyond the boundaries of the old village, some of the meadows which laid over of the landfill surrounding Busto Arsizio were also turned into squares. They are today Piazza San Michele (Square Saint Michael, facing the meadow upon which the Church of Madonna in Prato was built), Piazza Manzoni (Manzoni square), Piazza Garibaldi (Garibaldi Square, the meadow on which the Basilica door opened), and Piazza Trento e Trieste (Trento e Trieste Square).

Piazza Santa Maria



This is the square lying in the very center of the city, first in importance and towards which the four districts that had divided the ancient town convey. On the north part of the square there are the Sanctuary of Santa Maria di Piazza, the Church of Sant'Antonio Abate built in the XIV century and the bell tower the two construction share. More recently, a new street has been opened on the west side called Corso Europa (Europa Avenue) which ends about 300 meters ahead right into Piazza Manzoni.

Piazza San Giovanni

This is one of the three squares inside the city's historical centre. It is on the east of Piazza Santa Maria and it is connected to this square by two parallel streets, Sant'Antonio Street and Cavour Street. One side of the square is



entirely occupied by the Basilica of San Giovanni Battista. The rest of the square is surrounded by historical buildings, some of which, like Palazzo Volonterio, have been totally restructured in the past decade. This square is connected to three other important squares in the city: Milano Street connects it to Garibaldi Square, Monsignor Giuseppe Tettamanti Street connects it to Vittorio Emanuele II Square, and both Cavour Street e Sant'Antonio Street connect it to Santa Maria Square.

Piazza San Michele

It is located in what used to be the outer northern part of the historical center, in the place of an ancient Lombard fortification built in defense of the city in old times. It is dominated by the Provostal of Saint Michael the Archangel on one side and by the tallest building in the city on the opposite side. It is a few meters away from the park of the Museum of Textile Industry and next to the Manzoni Square.

Monumental Cemetery



The Monumental Cemetery is one of three in the territory of Busto Arsizio today, being the other two that of Sacconago and that of Borsano. Its localization is found at the beginning of Favara Street, which takes its name from a farmhouse placed on its way.

By the end of the XIX century, having the cemetery outside the boundaries of the settled area, where the "Ugo Foscolo Park" now rises, become too small, a new and bigger cemetery was built and opened in

1894.

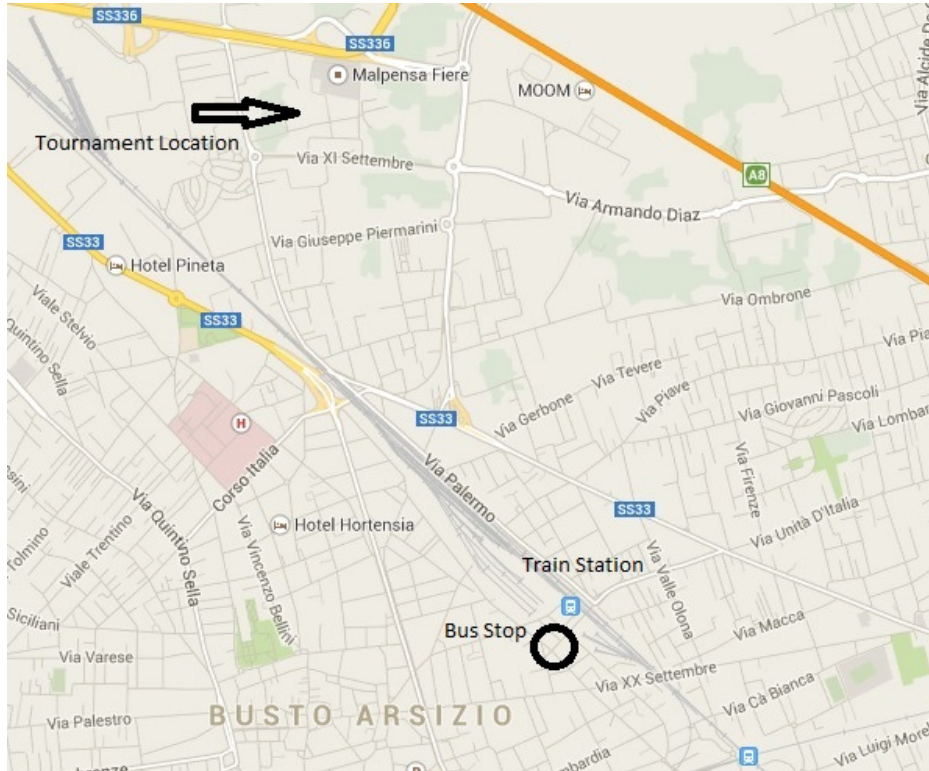
During the years, the cemetery has been expanded several times, and now occupies an area twice the surface of the beginning. In the meanwhile, the city also widened and the new neighborhood risen around the Church of Santa Maria Regina surrounded the whole area.

Natural Areas - The Ugo Foscolo Park

It lies on what had once been the old city cemetery, from the time when the cemeteries of the Churches of San Michele and San Giovanni became inadequate. Inside the park is a monument placed in 1909 to memory of the Veterans of the Battles of the Nation, consisting in Doric columns.



THE PUBLIC TRANSPORTATION SYSTEM



Busto Arsizio is a small city, then the best way to move within the city is taking the bus.

- If you want to reach the tournament venue with the public transport you must take the line number 11 (you can find the bus stop in front of the train station), and you need to get off in the last bus stop (called "Rione Sant'Anna").
- In the other way, if you want to reach the station from the Event Location you need to take the line number 1 (it makes the reverse path of the line number 11).

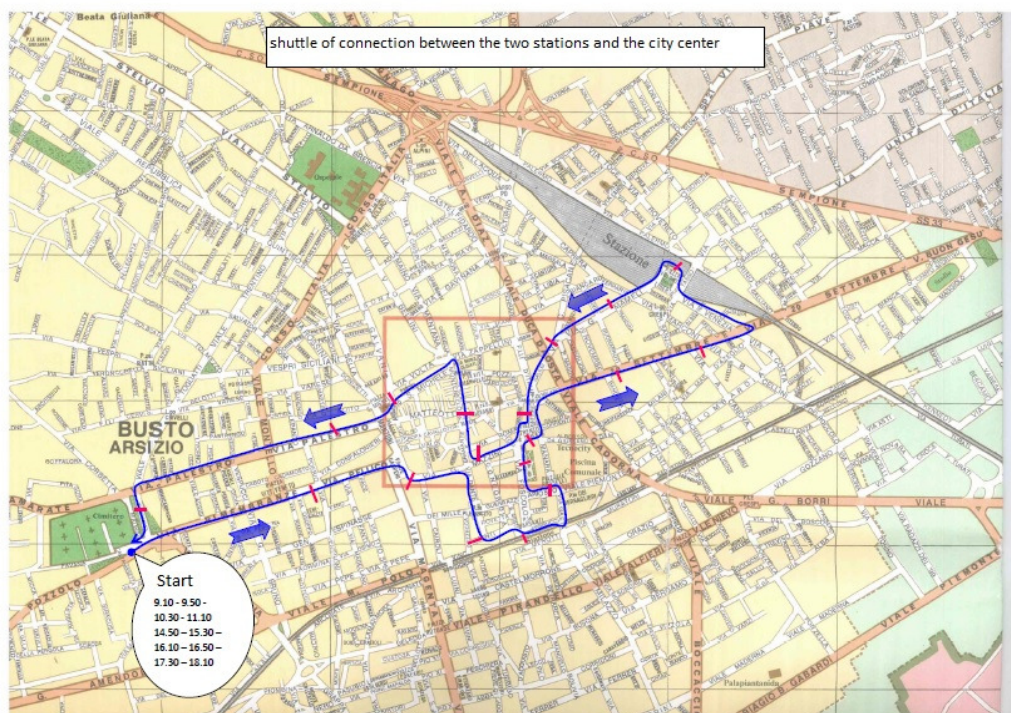
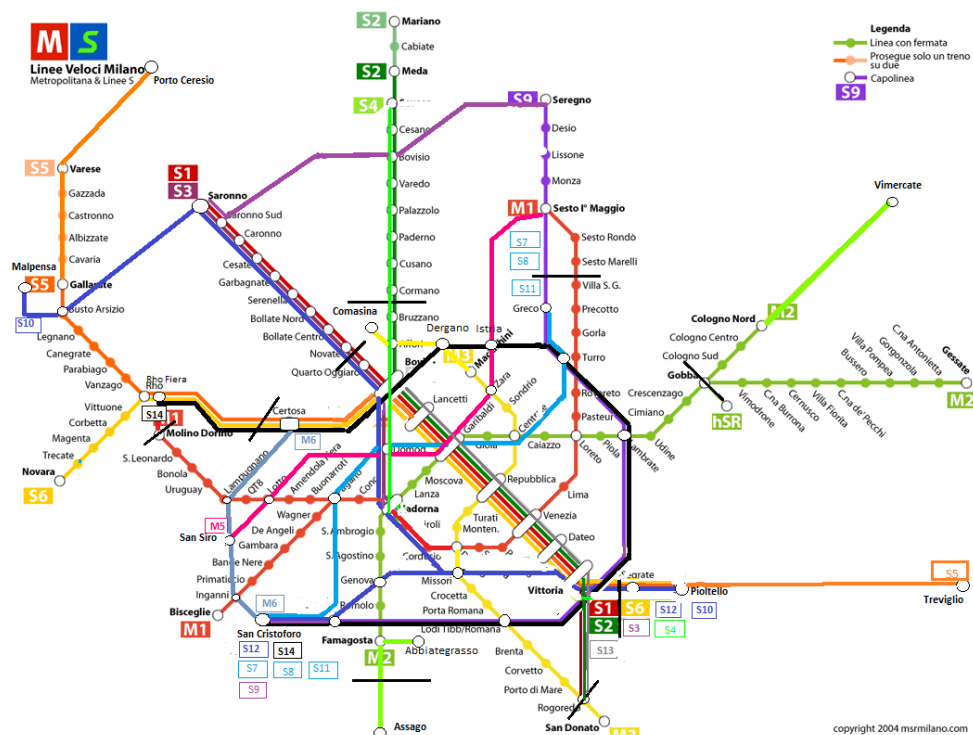
Now there are no the summer's timetables, but when they become available you can find them on this [web site](#).

If you want to visit the city, in front of the station you can find a shuttle that makes a complete tour of the city, and allows you to reach all the main squares that you can visit.

- Journey time: approximately 40 minutes for the shuttle
- Ticket: Ordinary ticket 1,25 € (60 minutes long)

In the next page you can find a map with the itinerary:

Here, instead, the Subway map of Milan (very useful if you wish to visit the city).



FOOD AND DRINK!



In Italy you can taste some of the best dishes in the world. We are famous for the Mediterranean diet, good wines and our chefs!

Milan offers the opportunity to sample some of these delights: among the most famous dishes there are the yellow Risotto with saffron (Risotto giallo allo Zafferano), Milanese Cutlet (Cotoletta alla milanese) and Cassoeula with various cuts of pork and cabbage, a caloric dish for winter season; among the desserts you can taste, the Panettone, which was nothing but a special bread prepared for Christmas.

- FOOD

1. [Italian Food] Antica Trattoria della Pesa, Viale Pasubio 10 (low prices)
2. [Italian Food] Anadima, Navigli - Via Pavia 10 (average prices)
3. [Italian Food] Cracco, Piazza Cordusio - Via Hugo 4 (high prices)
4. [Italian Food] Le Vigne, Navigli - Ripa di Porta Ticinese 61 (average prices)
5. [Italian Food] Artidoro, Cairoli - Via M. Campeiro 15 (average prices)
6. [Italian Food] La Brisa, Cordusio - Via Brisa 15 (low prices)
7. [Italian Sushi] Flingers, Porta Romana - Via S. Gerolamo Emiliani 2 (low prices)
8. [Slow Food] Il Teatro, Quadrilatero d'Oro - Via Gesù 6/8 (average prices)
9. [Fast Food] Luini, Duomo - Via Santa Radegonda 16 (low prices)
10. [Steackhouse] Taverna degli Amici, Porta Romana - Via Spartaco 4 (average prices)

- DRINK

1. [Bier House] Bar Magenta, Sant'Ambrogio - Via Carducci, 1
2. [Bar] El Brellin, Navigli - Alzaia Naviglio Grande 14
3. [Bar] Le Biciclette, Sant'Ambrogio - Via Torti 4

- NIGHTLIFE

1. [Club] Gattopardo, Sempione - Via Piero della Francesca 47
2. [Disco] Hollywood, Stazione Porta Garibaldi - Corso Como 15

LOCAL GAME STORES



	<u>Store</u>	<u>Address</u>	<u>Phone</u>
	Excalibur Games	Via Fiamma 36	+39 028 341-3592
	Joker Milano	Via Giulio Romano 17	+39 0258437717
	Fantamagus	Viale Romagna 50	+39 022666213
	Playtime Milano	Via Asiago 59	+39 02 45479889
	Pianeta Hobby	Via Leoncavallo 15	+39 0228040306