

MAGIC

TRAVELGUIDE LYON

GRAND PRIX
30 OCTOBER
01 NOVEMBER

SPREAD THIS DOCUMENT TO YOUR
FELLOW MAGIC PLAYERS COMMUNITY.
THINK GREEN : PRINT ONLY IF NEEDED.

TABLE OF CONTENTS



INTRODUCTION	3
ARRIVING IN LYON	4
PUBLIC TRANSPORTS	5
LANGUAGE	8
FOOD AND DRINK	10
LOCAL GAME STORE	14
LODGING	16
VISIT LYON	18
CONTACTING LOCAL JUDGES	23
WHO DID THIS ?	24

01. INTRODUCING LYON



WELCOME TO LYON

Lyon is one of the bigger city in France. There are no less than half a million people in this city and more than a million with its surroundings. Lyon is known as the former “Capitale des Gaules” (capital of the Gauls), being the capital of the country in the old days and has a rich and long history of almost 2000 years.

Lyon is at crossroads, not far from mountain, from the sea, close to Switzerland and Italy. The city has a growing popularity among the tourists from all around the world and the “fête des lumières”, which is a fantastic celebration of four nights where a variety of different artists light up buildings, streets, squares and parks all over the city. On the eight of December it gathers millions of visitors each year. You’ll find anything you want in Lyon, from good food to nice landscape and nice chilling places, and off course, Magic stores, players and tournaments !

The French regional coordinator and judge manager for this Grand Prix is **Guillaume Beuzelin**, Former **judge of the week**. The Venue is the same as last Lyon GPs, the Cité Internationale - You can find every piece of info you need **here**.

If you need the adresse, here it is :

50 Quai Charles de Gaulle
69463 Lyon, France

You can also find many things about the GP, the prizes, the venue and so much more on the **official site of the Grand Prix**.

Soyez le bienvenu !

02. ARRIVING IN LYON

Lyon- St Exupery Airport is located at 25km east of Lyon. It's one of the biggest airport in France and you can find a plane that lands in Lyon St-Exupery from more than 35 countries all over the world. There are 3 different terminals in St-Exupery Airport so be sure to check before you leave even if they are really close. There are several different ways to go to Lyon from the Airport, it used to be a cheaper means, but it is not anymore.

Rhone-Express is the easiest and fastest way to go to Lyon downtown. It's quite expensive (between 13 and 15,70€ for a single trip) but it goes from the airport straight to the biggest hub in Lyon (Part-Dieu Station). You can buy your tickets online on their [site](#). It's cheaper than at the airport. If you didn't buy your ticket online or in the airport, there's an extra 1€ fee inside the shuttle. There's a departure every 30 minutes between 4.25 and 6 am and from 9 pm to 0:00 am and a departure every 15 minutes between 6 am and 9 pm.

Car pooling, using the **French site** (in French and €) or the **English one** (in English and £), you won't find a cheaper way to go to downtown, between 3 and 5 euros. But you'll have to sign in the website and take care of everything by yourself. Search for rides between "aéroport St-Exupéry" and "Lyon part dieu".



Train, Lyon has several train stations and the main one Part Dieu, is connected to a fairly large amount of other cities in France or in other countries. If by any means, you should arrive to a secondary train station (Perrache or Jean Macé) reaching Part Dieu station is the easiest way to go to the venue. There are regularly trains linking all the train stations.

Taxi, you'll find them at the exit of the Airport, either waiting for you, either not, in which case you'll have to call from specific terminals outside the airport. There's not fixed price for the trip between airport and city downtown. The trip cost will be displayed on the price meter with extra charges for luggages or four passengers in the car. On average the run between airport and Part-Dieu train station is 55€ between 7am and 7pm and 75€ after 7pm and on sundays.

03. PUBLIC TRANSPORTS

Lyon has a pretty big and efficient public transport system. You'll find 4 metro lines (A, B, C, D), 5 tramway lines, 26 major bus lines (labelled with a C) and around 100 normal bus lines to go wherever you want in the city and close suburbs. Most of these lines work from around 5.30 AM to around 00 AM. There are also 4 night buses line called "pleine lune" ("full moon") to bring you back home.

The **website** is clear and easy to use to find your way. You can also find the TCL App on [google play](#) or [itunes](#) which is pretty convenient as it can display in real time all the troubles on the network.

You'll find on the website an **interactive plan**, or many standards maps depending of your needs.

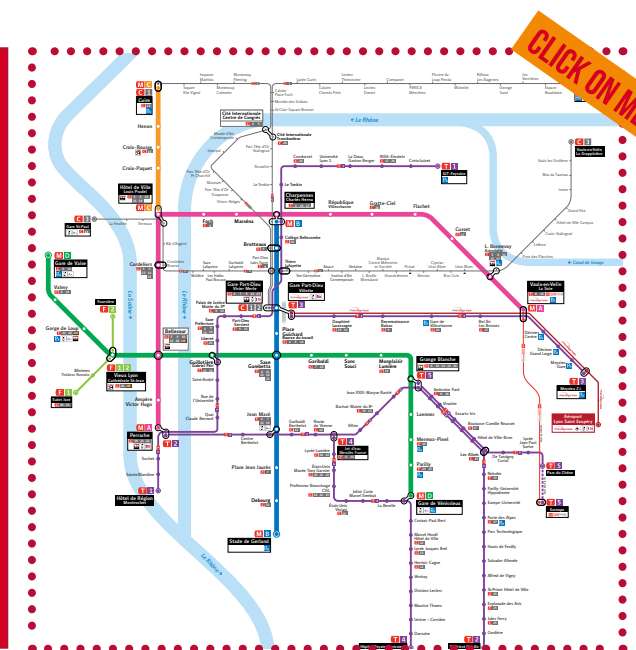
You validate your ticket in the tramways and buses and at the entrance of metro stations. Validate your ticket every time you enter a new tram, bus or metro.

Don't ride without a ticket, there are many tickets inspectors, especially in big hub stations (like Bellecour and Part Dieu) and in the evening and the fine is quite expensive (more than 30€). The inspections intensify the first day of each month because it is the time that monthly subscriptions should be renewed, so it is the perfect time to find people to fine. It will be the case at the end of the GP, so be careful!

FARES

Tickets are available in ticketing machines at every metro and tram station or directly in the buses (but it will cost 2€ instead of 1,8€). But be careful, you cannot buy any ticket in the tramway. You can travel on all the network (metro/tram/bus/funicular) during one hour with a standard ticket after the first validation.

1 ticket is	1,80€ (2€ in the buses)
10 tickets pack is	15,90€
2 hours ticket is	3€
24h ticket is	5,5€
Evening ticket (7pm to end of service) is	3€



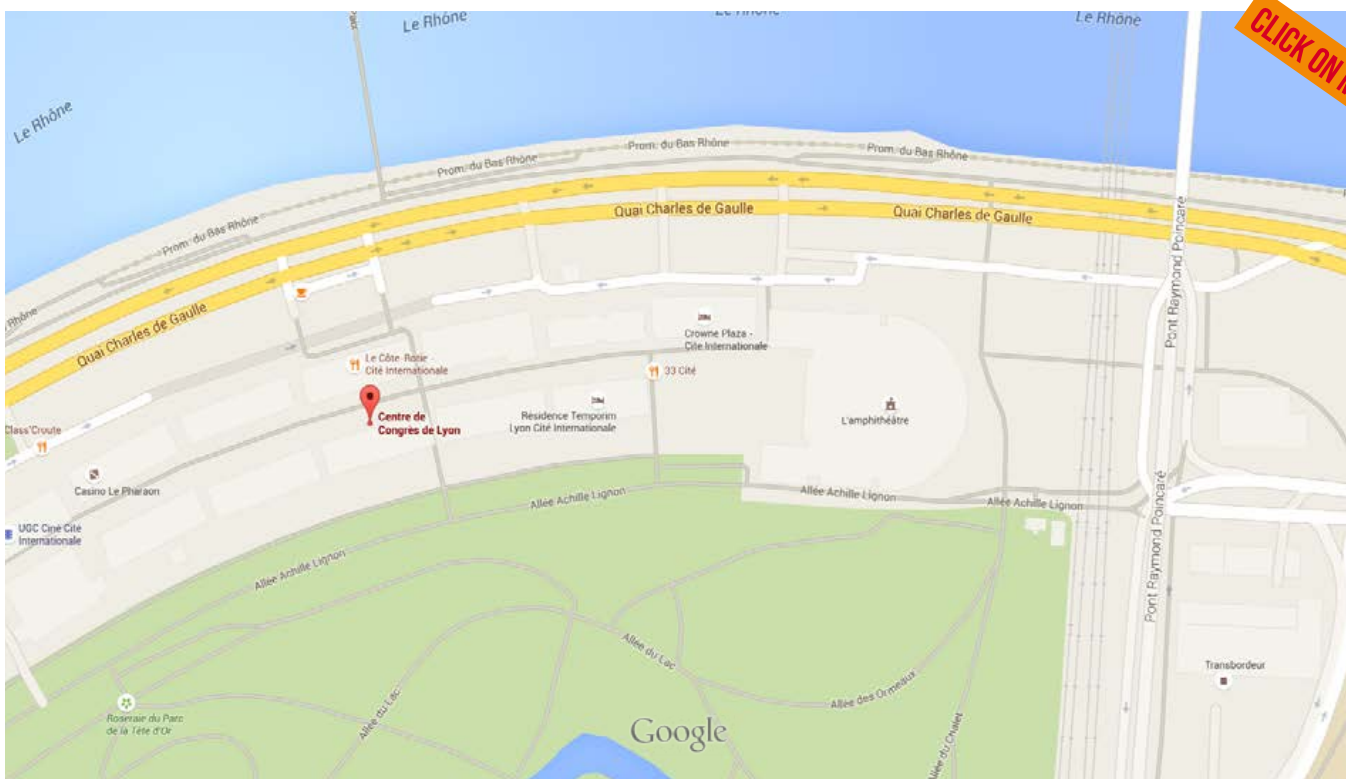
Où voulez-vous aller ?

EASIEST WAY TO MOVE

ADDRESS

Quai Charles de Gaulle, 50
69463 Lyon, France

CLICK ON ME



TRAVELLING TO THE VENUE

The only way to go to the venue using public transports is using one of the 4 major bus lines serving the Cité Internationale. Fortunately, you can find them at pretty big stations you'll pass by no matter what.

- C1** : From Lyon Part Dieu station to Cité Internationale
- C4** : From Jean Macé station and Saxe Gambetta to Cité internationale
- C5** : From Bellecour and City hall to Cité Internationale
- C26** : From Grange Blanche and Villeurbanne to Cité Internationale

TRAVELLING TO THE VENUE **FROM THE AIRPORT**

The easiest way to do that is to combine Rhone-Express (see above) to travel from the Airport to the Lyon Part-Dieu Station. Walk across the station (buses are on the other side of the station) then take the C1 bus in the direction of Cité Internationale.

TL;DR: **RHONE EXPRESS + C1 BUS**

04.LANGUAGE



The official language of France is of course french. This a latin language, so other latin-based languages (such as italian or spanish) speakers should get some words here and there. French language is one of the most spread one over the world some words and expressions are commonly used in many other languages, english included.

As for communication, the majority of the population has some basics in English, but do not expect any mindblowing conversation in general, but I guess you will be treated with our very famous accent.

Reading French is kind of a rocky road. There are many rules and many exceptions to these rules. Depending on the case letters will not be pronounced the same way.

EXPRESSIONS AND USEFUL WORDS

Hello : **Bonjour** or variants like "bonsoir" when the evening comes

Thank you : **Merçi**

Sorry/excuse me : **Pardon, Excusez-moi**

Airport : **Aéroport**

beer : **Bière**

It is also worth-mentionning that the "s" of plural nouns are not pronounced. Several unusual letters may also appear strange for non-French speaking persons.

- "é" is pronounced /e/ like "a" in "jail"
- "è" is pronounced like "Hector" or "bell"
- "ç" is pronounced like an "s" like in "sorry"
- "à", "ô", "ê" do not have any specific pronunciation

the letter "s" is either pronounced either like in english or like a z when the s is between 2 vowels or in the case of a liaison (which is a language mechanic of pronunciation when a word ends with a consonant and the next word is starting with a vowel or a silent "h"). While people will understand you even if you do not perform the liaisons, it might be useful for you to know to recognize words if some "z" sounds appear in the conversation.

The french words do not have specific inflections when spoken, which is unusual for english speakers. The tone is more depending on the meaning of the sentence and the location of the word in the phrase than on the word itself. Usually if you do not accentuate anything it is perfectly understandable by french people.

**BONJOUR.
MERCI.
AU REVOIR.**

Puis-je vous aider ?

05. FOOD AND DRINK

Welcome to the World capital of gastronomy (just that!) Lyon is renowned for its local specialties which you can find in little restaurants called “Bouchons”. Most of them can be found in the “Vieux Lyon” or in the “Rue des Marronniers”. Lyon’s food is pretty fat heavy, you mostly can’t eat traditionnal food while on a diet. If you’re feeling a bit daring, you can try the followings:



.01 LE “TABLIER DE SAPEUR”

Parts of a belly beef breaded then fried. This is served with a “sauce gribiche” made with chive, and potatoes. It can be a starter or a main course.



Bon appétit



.02 LA “CERVELLE DE CANUT”

Cream cheese with salt, peppers, chive, herbs.

.03 LES “GRATTONS”

Fried pork fat served as appetizer

.04 LA “QUENELLE LYONNAISE”

Kind of dumpling made of flour and mashed pike, served with a “sauce nantua” made with butter and crawfish

.05 LA “SALADE LYONNAISE”

Mixed salad with: poached egg, crust of bread, tomatoes, fried dice of bacon or chicken livers

Allons manger un bout !

On va prendre un verre ?

WHERE TO EAT AND DRINK

You are in France, let's drink (with moderation) some wine. In Lyon, you're between the "côtes du Rhône" and the "Beaujolais" mostly known for their red wines. You will find wines from almost everywhere in France, but if you go into a Bouchon, don't ask for a Bordeaux Wine ! Wine bars are also quite easy to find if you want to taste a wider range of wines. You'll find some local beers also, but nothing really noticeable, most restaurants have basic beers (Heineken, 1664 or Leffe mostly). The two most touristic neighbourhoods for eating and drinking is the Old Town "le vieux lyon" which is the western part of the city. There you'll find most of the bouchons lyonnais and most of the pubs. The bouchons in this area are mostly "tourist traps". Even if they're good, they're very expensive.

One of the most iconic bouchon in the vieux lyon is "**Maison Chabert**", one of the oldest bouchons in town, you can't find a more traditional bouchon in Lyon. It's quite expensive (the menu is 27€) but the quality is definitely here.

The other touristic place is the **Rue Mercière**, where you can find mostly anything, from traditional lyonnaise food to sushi and burgers. One of the better restaurants there is "**Le Mercière**", it's expensive (at least 30€/person for a complete meal without the wine) but it's definitely one of the best affordable restaurants in Lyon. You will find almost all the traditional recipes and all classic dishes in restaurant (from beef to pastas). If you're not into Lyonnaise food, I recommend to you the Penne with Foie Gras and Truffles. This is a real Delight.

If you're looking for less touristic bouchons, you can visit the "**Rue des Maronniers**" near the **Place Bellecour**, one of the biggest place in Europe. There you'll find many bouchons. You'll find another **Chabert Restaurant** for example, La Mère Jean or Chez Mounier. These restaurants don't even have a website. Don't expect to leave these restaurants if your plate is not completely empty, that would be rude ! Another classic restaurant in Lyon is the "**Brasserie Georges**", near the Perrache station. Almost 180 years



old brasserie, if you have only one restaurant to visit in Lyon, this is where you should go !

You'll find all the traditional lyonnaise recipes and also lots of dishes from Alsace, like different sauerkrauts and classic brasserie meals, meat, fishes, sea food...

You don't want to eat traditional lyonnaise food but still want to eat in a typical lyonnaise restaurant ? Go to



MAISON
CHABERT



one of the **Ninkasi** ! Created in 1997 near the Gerland Stadium, these breweries became famous in no time in Lyon.

Brewing their own beers and serving delicious burgers and salads, they quickly opened new restaurants all around the town. Choose your meat (beef, chicken or fish), choose your toppings (around 30 different

choices) and your sauce and here you go ! The nearest Ninkasi from the Venue is the Ninkasi St-Paul at the entrance of the Vieux Lyon. You'll find many pubs near the restaurant also.

If you feel more neat, "L'ourson qui boit" is probably one of the best restaurants in Lyon if you do not want to spend too much on it. You have to make a reservation well in advance if you want to make to have a seat, like a month beforehand, but for a menu under 30€ and a top notch French cuisine with some Japanese influence, it is totally worth it. (+33 4 78 27 23 37)



06. LOCAL GAME STORE

Lyon has indeed several *places* where you can play Magic and other board games. Here is a little more :



PARTY ROCK BAR

Advanced *Rue du Plat, 3 / 69002 Lyon* **+33 (0) 426646064**

Quite a small place, essentially a bar where people can play Magic. This is a rather casual environment. Go there if you want to grab a beer and play some games.

CARTA'JEU

(CLOSED FROM SATURDAY TO SUNDAY DURING GP LYON)

Advanced+ *Rue Garibaldi, 297 / 69007* **+33 (0) 952611178**

If you need to buy last minute singles to complete your deck, this is the place to go. There is a Magic Tournament basically everyday.

TROLLUNE

Advanced+ *Rue Sebastien Gryphe, 25 / 69007* **+33 (0) 478698556**

Probably one of the biggest store in France, 3 Rooms to play, a large choice of books (even in English !). Figurines and boardgames, everything you need should be there.



UKRONIUM 1828

Advanced+ *Rue de la Thibaudière, 55 / 69007* **+33 (0) 437701595**

If you like playing in a room with a nice old school ambiance, this is the good place. You can sit there to play Magic or any board game among the hundreds available here.



07. LODGING

Lyon is quite a big city in France and lodging prices go accordingly. Depending on whether you want to be near the venue or not you still can book a room for a fairly ok price. On the average, count 50€ per night per person.

NEAREST HOTELS (BUT NOT THE CHEAPEST)

RÉSIDENCE TEMPORIN CITÉ INTERNATIONALE

Quai Charles de Gaulle, 35 / 69006 LYON
Website

+33 (0) 437475767

Here you'll share little appartments and not only rooms: in each appartment you'll have access to a kitchen and a fridge and of course bathroom and internet connexion ! This is the closest hotel from the venue, about 2 minutes walk from one to the other.

CROWNE PLAZA

Quai Charles de Gaulle, 69 / 69006 LYON
Website

+33 (0) 811 980 002 (Reservations)
+33 478 178 686 (Front Desk)

MARRIOTT

Quai Charles de Gaulle, 70 / 69006 LYON
Website

+33 (0) 478 175 050
(Reservations/Informations)

APPART-HOTEL PARK & SUITES

Grande Rue de Saint Clair, 157 / 69300 CALUIRE&CUIRE
Website

+33 (0) 472 001 360

CHEAPEST HOTELS

IBIS BUDGET PART DIEU

Rue de la Villette, 52 / 69003 LYON
Website

+33 (0) 892 701 275

APPART'CITY LYON - PART-DIEU GARIBALDI

Rue de l'abondance, 40 / 69003 LYON
Website

+33 (0) 472 608 383



Bonne nuit !



IF YOU FEEL A LITTLE MORE LIKE A BACKPACKER, VOUS MAY AS WELL WANT TO TRY HOSTELS IN LYON.

SLO LIVING HOSTEL

Rue Bonnefoi, 5 / 69003 LYON
Website

+33 (0) 478 590 690

Bonne visite !

08.VISIT LYON

Lyon is one of the bigger city in France, and has the chance to be one of the best place you can ask if you are keen on gastronomy, but it is also a city with a huge history behind it. While you can have a more exhaustive list of places to be in Lyon on the tourist information office [website](#), if you have only some moments to spend, then here are some headlines of the city of Lyon :

FINE ARTS MUSEUM

Website

Place des Terreaux, 20 / 69001 Lyon, France

Open daily **except Tuesdays** and **holidays** from 10:00 a.m. to 6:00 p.m

7 € - 12 €

+33 (0) 472 101 740



The building itself is an ancient coven with gardens which are worth it themselves, but the collection is also one of the most important in Europe. While you have more than 70 rooms to visit, Antiquity and paintings from 14th century to the 20th are the bigger parts of it.. It is **free for people under 26** and ranging from 7€ to 12€ depending on what you want to see. If you are into museums, you should try this one.

ROMAN THEATRES OF FOURVIÈRE



The place in which Lugdunum was founded in 43 BC by Munatius Plancus includes the Grand Théâtre (tragedies and comedies), the Odéon (music, reading), the foundations of a temple to Cybele and the remains of a hand-crafting area. This site was listed as an "Historical Monument" in 1905. The Great Theatre, the oldest in France, built by Augustus in 15 BC. In the theatre's stands, blocks of white limestone give us an idea of what the monument originally looked like. This is already spectacular, but from the hill of Fourvière, you will have a beautiful sight of the city of Lyon.

PARC DE LA TÊTE D'OR (GOLDEN HEAD PARK)

The Tête d'Or park is one of the largest urban parks in France covering a total of 105 hectares including 17 hectares of lakes. It is well known for its magnificent international rose garden which visitors come to admire in springtime. We also have here France's leading botanical garden with more than 20,000 varieties. The locals come here for the huge African plain where zebras, giraffes, antelopes, lions and other rare species roam free in a special 3 hectare area. This is a city centre park, where the locals come to relax and unwind.

This is basically a free visit for this Magic Week end because the parc is very next to the Grand Prix Venue, so do not hesitate !



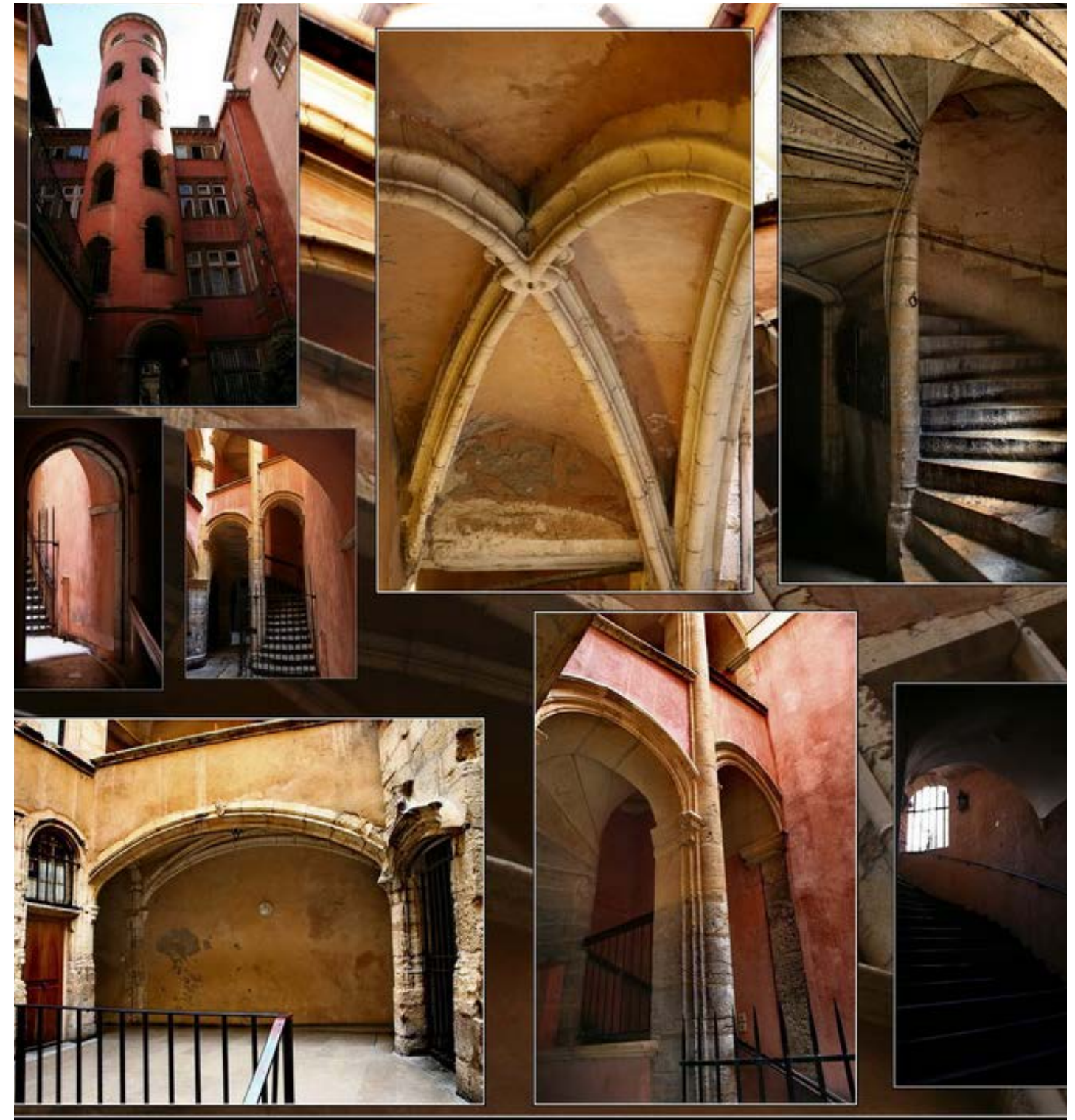
VISIT HISTORY



CROIX ROUSSE DISTRICT

This district includes a hill, in continuation of the Peninsula, "the Slopes of Croix-Rousse" (include in the district of the UNESCO world heritage) and "the Village" which overhangs all the city. The Croix-Rousse neighborhood is nicknamed the "village" because of lifestyle quality the residents can get there. Even when a part of Lyon since 1852, this area kept its particularities. Transformed

in the 19th century by the arrival of the canuts, gold, silver and silk (yarn) weavers, this hill remains marked by the work of the Grande Fabrique. The maintaining of this handweaving excellence center reveals at the same time the canuts' knowledge and their impact to social history. The plateau of the Croix-Rousse also gives breath taking views on Lyon and its suburbs.



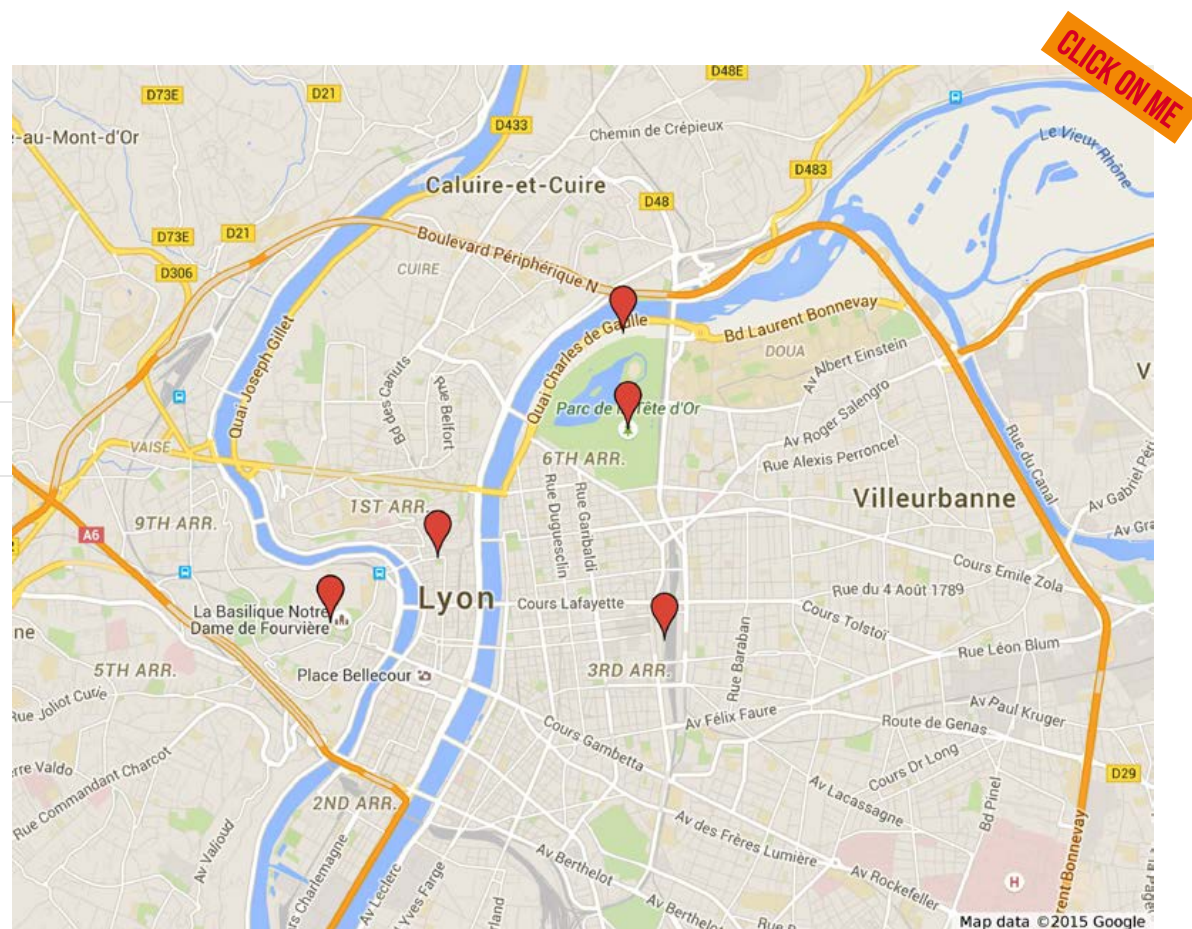
TRABOULES






Traboules, these shortcuts in the form of internal passage, allow to communicate from a street to the other one by crossing one or several buildings and run. They are mainly situated in Old Lyon and in Croix-Rousse. Trabouler, from Latin "Trans ambulare" means "pass through". Particularly numerous in Old Lyon, they allowed, in the Middle Age, to quickly reach the boat on the Saône. They housed the clandestine comings and goings of Lyon Resistance during the 2nd War.

The main alleyways are:

- 10 and 12 rue St Georges (courtyard and interior garden, open from 7 am to 19h)
- 27 rue St Jean to 6 rue des Trois Maries traboule can cross two courses gallery 16th century, fully restored with plaster bright.
- 40 rue St Jean to 5 Place Neuve.
- 54 rue St Jean to 27 rue du Boeuf: longest traboule neighborhood. It crosses four courses and four buildings.

LYON TOUR



-  Parc de la Tête d'Or
-  Centre de Congrès de Lyon
-  Musée des Beaux-Arts de Lyon
-  Fourvière
-  Gare de Lyon Part-Dieu

09. CONTACTING LOCAL JUDGES

Êtes vous perdu ?

In case of need of extra bit of information, feel free to contact the local judges who will be happy to help you. Either by mail, JudgeApps or phone, ask us anything !



GUILLAUME BEUZELIN

REGIONAL COORDINATOR | JUDGE LEVEL 3
PHONE: **+33 6 32 98 45 50**
EMAIL: **BEUZELIN.GUILLAUME@GMAIL.COM**

Guillaume beuzelin just arrived in Lyon.
If you really need to contact someone in Lyon, call Théo Cheng or Gilles Demarle.



THÉO CHENG

JUDGE LEVEL 2
PHONE: **+33 631 69 67 39**
EMAIL: **THEOCHENG.MTG@GMAIL.COM**



GILLES DEMARLE

JUDGE LEVEL 2
PHONE: **+33 623 16 06 38**
EMAIL: **TAURENHARN@HOTMAIL.COM**

10.TEAM MEMBERS

WHO MADE IT ?

GUILLAUME BEUZELIN
GILLES DEMARLE
THÉO CHENG
VICTOR TRUONG

TRAVELGUIDE