



**MAGIC**  
The Gathering<sup>®</sup>  
**GRAND PRIX**  
**SEATTLE-TACOMA**

## Table of Contents

• Introduction	
• Seattle and Tacoma at a glance	3
• International Traveler Tips	3
• Travel	
• The Airport	4
• To Downtown Seattle	4
• To Tacoma (the GP Venue)	5
• Food and Parking	6
• Hotels and Hostels	
• Seattle	7
• Tacoma	8
• Tourist Spots	
• Seattle	9
• Tacoma	10
• Local Game Stores	11
• Acknowledgements	12



## Welcome to Grand Prix Seattle! ...Tacoma

In the Northwest of the Pacific Northwest lies the smelly town of Tacoma (alright... I guess it's not *that* smelly). Tacoma is about a 30-45 minute drive south of the more familiar city of Seattle (home of Wizards of the Coast!). This lovely Grand Prix is within the US Northwest region, who's regional coordinator is (at the time of this writing) Scott Marshall. However, Scott doesn't live here and probably doesn't know much about these sorts of things in Seattle anyway so if you have any questions about Seattle or Tacoma, feel free to contact any one of us on the Travel Guide team! Our contact info is at the end of this Travel Guide.

### International Traveler Tips

#### Currency & Payment

The local currency is the American Dollar (\$, USD). Exchange rates from your currency will vary. Non-American currency is not accepted anywhere. TravelEx Currency Exchange ([Click](#)) and Seattle Currency Exchange ([Click](#)) are local stores that specialize in currency exchange. Most stores accept VISA and MasterCard.

#### Tipping

At restaurants, it is typical to include a gratuity between 10-20%, with a tip of 16% and above indicating that the service was excellent. Some restaurants within Seattle are moving away from tipping and will indicate that via signage either at the entrance or on their menu.

#### Electricity

The United States uses Type A plugs, with voltage at 120 V at 60Hz. Adapters are usually available in the SeaTac airport gift shops.

#### Social Interactions

It is typical to greet a new friend with a "Hello, how are you?" and a handshake. Alternatively, the fist bump (a closed fist raised to meet your friend's closed fist knuckle to knuckle) is also a common greeting for people you know. When exciting or excellent things have happened, a high five (palm raised high to clap against your friend's palm) is fairly standard.

#### Emergency Services

Dial 911 from any phone and you will be connected to someone for any emergency.

## Travel

### Airport

Most travelers will be flying into the Seattle-Tacoma International Airport (also known as Sea-Tac Airport, airport code SEA - [Click](#)). This is a large airport with three terminals (A, B, and C). The N and S terminals are slightly separated and require a free 5 minute train ride, so do factor that into your travel time. Signage within the airport is excellent but staff will gladly point you in the right direction in case of confusion. Once you're in the Main Terminal, you'll want to head to Baggage Claim.

### Getting to Downtown Seattle

Once you've grabbed your bags, if any, you can step right outside to the Ground Transportation area where taxis are available. The Sea-Tac Airport guide covers this well ([Click](#)).

**Taxis** in this area are trustable. You would expect to see taxis from Yellow Cab ([Click](#)), as well as other companies. A taxi to downtown Seattle will cost around \$65, depending on traffic. After you get your luggage, go up one set of stairs and take the skybridge across to the parking building. There are signs that will point you to the taxis.

Using a **shuttle** service is a popular way to keep costs down. Shuttle Express in particular is the most popular choice ([Click](#)).

You can also use the Link **Light Rail** service to get to Seattle ([Click](#)). The Light Rail takes only 35 minutes to get downtown and costs only \$3.00 for the longest trip. You can pay with cash or credit card at the ticket machines.

**Bus** service is also available. The King County public bus line will get you from Sea-Tac to most King County locations. Select "Airports: SEATTLE TACOMA INTERNATIONAL AIRPORT" on this page to see your options ([Click](#)). The bus will cost \$3.50 at most, but is usually only \$2.75 (dependent on destination). It is cash only, exact change (if you pay extra, you do not get change back).

There's also an Arrivals **pick-up** area here if you've arranged a ride. You'll note that above each standing area are pick-up area numbers as well as indications of what airport that area is for. Providing that information to the person picking you up should help them sweep you up most quickly. If you are looking to take an Uber from the airport, you can legally only request an UberBLACK or UberSUV. They will pick you up from the Arrivals area. Most users have had luck requesting an Uber X for the one of the park and rides (Hwy 99 and 176<sup>th</sup> being the most common, since it is closest). The driver usually knows this is an airport pickup and will call to confirm that they will pick you up from the Arrivals area. Conversely, there is a skybridge to the Hwy 99 and 176<sup>th</sup> park and ride so it is easy to request an UberX there. An UberBLACK to downtown Seattle will cost about \$55.

### Getting to Downtown Tacoma (the Venue)

The good news is that there are a few public transportation options! The bad news is that most options are either expensive or time consuming.

**Taxis** are the most expensive option. They will run you about \$100 each way, depending on traffic. After you get your luggage, go up one set of stairs and take the skybridge across to the parking building. There are signs that will point you to the taxis.

Using a **shuttle** service is a popular way to keep costs down. Shuttle Express in particular is the most popular choice: ([Click](#)) You can expect to pay around \$55 for a shuttle to downtown Tacoma.

**Bus** service is also available. The King County public bus line will get you from Sea-Tac to the Tacoma Light Rail. Select "Airports: SEATTLE TACOMA INTERNATIONAL AIRPORT" on this page to see your options: ([Click](#)) The bus will cost \$3.50. It is cash only, exact change (if you pay extra, you do not get change back). The most frequent bus is the 574 to Lakewood. Once you get to Tacoma (exit on the 26<sup>th</sup> St E and D St E stop), it's a short walk to the Tacoma Light Rail. Take the Light Rail to the Convention Center stop and exit. The Light Rail in Tacoma is free! This trip takes a little over an hour from when the bus leaves.

There's also an Arrivals **pick-up** area here if you've arranged a ride. You'll note that above each standing area are pick-up area numbers as well as indications of what airport that area is for. Providing that information to the person picking you up should help them sweep you up most quickly. If you are looking to take an Uber from the airport, you can legally only request an UberBLACK or UberSUV. They will pick you up from the Arrivals area. Most users have had luck requesting an Uber X for the one of the park and rides (Hwy 99 and 176<sup>th</sup> being the most common, since it is closest). The driver usually knows this is an airport pickup and will call to confirm that they will pick you up from the Arrivals area. Conversely, there is a skybridge to the Hwy 99 and 176<sup>th</sup> park and ride so it is easy to request an UberX there. An UberBLACK downtown Tacoma will cost about \$95.



## Food around the Venue

All of these suggestions are within walking distance of the venue, although some might have too slow of service to be able to go during your break.

Harmon Brewery – [Click](#)

Great gastropub! A little on the longer side for time.

Hot Rod Dog – [Click](#)

Quick and easy hot dog place.

Mexico Magico – [Click](#)

Delicious Mexican food that is pretty fast.

Galanga Thai – [Click](#)

Awesome Thai food and you can get it to-go!

Simply Panini – [Click](#)

Quick sandwich café.

Pacific Grill – [Click](#)

It takes a while to eat here but it is worth it!

## Parking at the Venue

Park at the Convention Center – [Click](#)

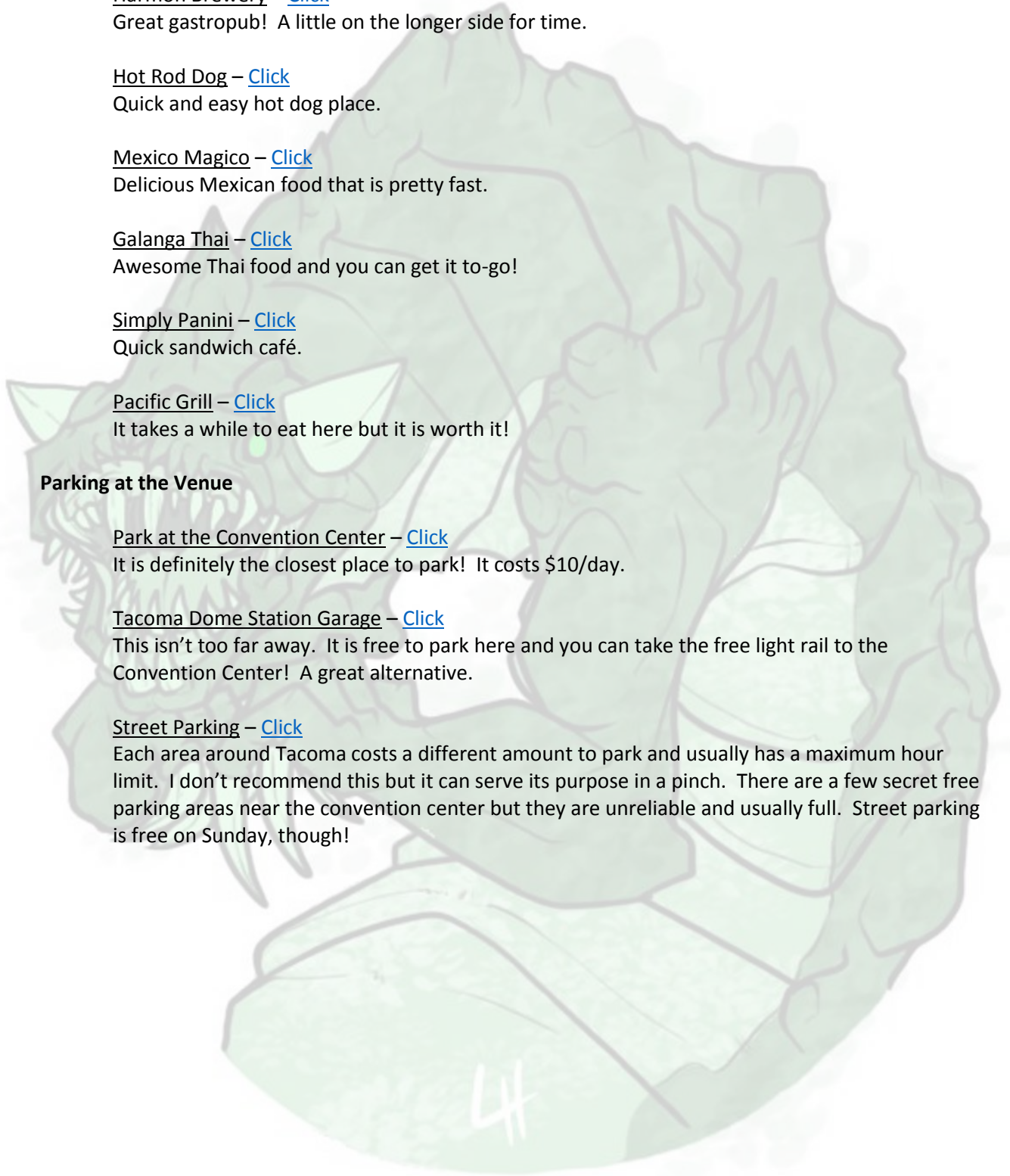
It is definitely the closest place to park! It costs \$10/day.

Tacoma Dome Station Garage – [Click](#)

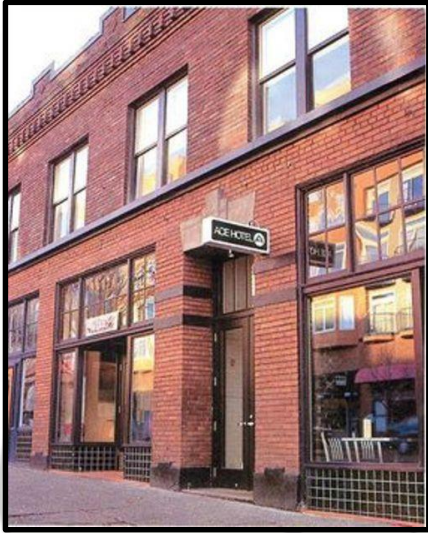
This isn't too far away. It is free to park here and you can take the free light rail to the Convention Center! A great alternative.

Street Parking – [Click](#)

Each area around Tacoma costs a different amount to park and usually has a maximum hour limit. I don't recommend this but it can serve its purpose in a pinch. There are a few secret free parking areas near the convention center but they are unreliable and usually full. Street parking is free on Sunday, though!



## Seattle Hotels



### The Ace Hotel – [Click](#)

A hipster hotel deep in the heart of the hipster neighborhood of Belltown in Seattle

### Days Inn – [Click](#)

Not as interesting of locations, but cheap and has basic amenities.

### Holiday Inn – [Click](#)

Relatively cheap and it is a nice location near the Pacific Science Center.

### Hotel 1000 – [Click](#)

This place is expensive but is very fancy. It is also in the heart of downtown Seattle and has walking access to pretty much everything you would want.



### Aurora (Highway 99)

There are a number of very, very low-cost places to stay on Aurora Avenue in Seattle. Generally these are very low-quality and are probably good to avoid.

## Seattle Hostels



### The Green Tortoise Hostel – [Click](#)

This is located in the heart of Seattle right next to the Pike Place Market. As with all low cost accommodations, you'll want to be sure to keep your valuables safe and/or with you. Excellent location.



## Tacoma Hotels

There are 2 event hotels for this event! Both are within walking distance of the venue.



Hotel Murano  
1320 Broadway Plaza  
Tacoma, WA 98402  
[Click](#) – For reservations with the event rate  
Rates starting at \$119/night

Courtyard Tacoma Downtown  
1515 Commerce Street  
Tacoma, WA 98402  
[Click](#) – For reservations with the event rate  
Rates starting at \$129/night



There are a few options on AirBnB ([Click](#)) but they will be either much more expensive or too far to walk.

Unfortunately, there are no hostels in this area.



## Things to See and Do in Seattle

Seattle is famous for its coffee, grunge, Microsoft. If you're planning on visiting a number of tourist attractions, the Seattle CityPASS ([Click](#)) can be an excellent way to save money.

### Pike Place Market - [Click](#)

The Pike Place market is a fixed public market open year round. You can purchase the freshest of produce and seafood here: it's often used by local restaurants. A popular attraction here is the fish throwing done at the Pike Place Fish Market ([Click](#)). The market is multi-storied labyrinth of interesting stores. Once you pick up what you'd like for lunch, right around the corner is the Victor Steinbrueck Park ([Click](#)), which is an excellent place to eat your lunch and enjoy the Northwest scenery. It also houses the First Starbucks ([Click](#)). You can drink coffee where it all began. If you are a fan of Starbucks coffee, you may also want to check out The Roastery on Capitol Hill ([Click](#)) which is a premium Starbucks with roasting tours.

### Seattle Center - [Click](#)

The Seattle Center was built for the 1962 World's Fair, and is still a big community space. There is a large park area with a large public fountain for people to relax and play in. Note that the International Fountain ([Click](#)) plays music with a synchronized water show at the beginning of each hour.

### Chihuly Garden and Blown Glass Museum - [Click](#)

Dale Chihuly is internationally famous for his work with blown glass. This museum has beautiful highlights from his work. Bring a camera.

### Experience Music Project - [Click](#)

A museum dedicated to music and pop culture, including a bunch of interactive exhibits where you can jam. The EMP also hosts the Science Fiction Museum, full of interesting and cool props from science fiction history. It is right next to the Space Needle ([Click](#)) where you can ride the space elevator to the observation deck and see all around Seattle. Both are pretty great spots for photography.

### Pacific Science Center - [Click](#)

While mostly intended for families and education, the Pacific Science Center does have a full IMAX theater, laser shows in the Planetarium, and a butterfly house you can walk within.

### Ride the Ducks - [Click](#)

This is a thing. Tourists like it because it covers a large swath of Seattle quickly and educationally. Locals mostly tolerate it without throwing eggs at it too often. Note that you do get to ride in an amphibious vehicle that does boat through the water. It's quite possibly that locals will be sitting there quietly judging you. Ignore them and keep quacking your quacker.

### Seattle Ferry - [Click](#)

Take a ferry to an island and back, enjoying the views of the Puget Sound. Bainbridge Island is the most common destination from the downtown ferry and has many wine tasting rooms and great food. It's a great day trip that doesn't require a car.

## Things to See and Do in Tacoma

### Museum of Glass – [Click](#)

The Museum of Glass provides a dynamic learning environment to appreciate the medium of glass through creative experiences, collections and exhibitions. It's very close to the venue!



### Lemay Car Museum – [Click](#)

This museum was designed to preserve history and celebrate the world's automotive culture. The museum houses up to 350 cars at a time! Unfortunately, this is quite a drive from downtown and public transportation is not viable.

### Point Defiance Zoo and Park – [Click](#)

This is the only combined zoo and aquarium in the Northwest! You'll see sharks and seahorses, polar bears and peacocks, walruses and wolves, all in one place. This is about an hour bus ride from downtown Tacoma.



## Local Game Stores in Seattle

### Card Kingdom – [Click](#)

This has a great restaurant space and plenty of tables to play your favorite games upon. You can order cards on the computer stations and have them delivered to you there quickly. This is the largest store in Seattle.

### Mox Boarding House – [Click](#)

This is the Eastside branch of Card Kingdom. It features an even larger restaurant and even more tables for gaming. Just like its Seattle counterpart, it is the largest store on the Eastside.

### Raygun Lounge – [Click](#)

Located on Capitol Hill, this is not much of a store but a bar where they have Magic events. Most of the time, there is a D&D or minis game going on as well.

### Phoenix Games – [Click](#)

Also in Capitol Hill, Phoenix Games has no food or drinks but a ton of comics and other trinkets for you to look through while waiting for an event to kick off.

### Green Lake Games – [Click](#)

A bit north, this is a small store that has a lot of “wacky” formats throughout the week. There are often two crowds here: 1) kids and new players 2) over 21 and veteran players. Group 2 usually plays in the bar across the street.

## Local Game Stores in Tacoma

### Northwest Sportscards – [Click](#)

This is the largest store in Tacoma. More often than not, you’ll find grinders and other veteran players in their events. It is probably the best place to get singles in Tacoma.

### Uncle’s Games – [Click](#)

Uncle’s Games is a local chain that only recently opened up a location in Tacoma. They have a great selection of board games and Magic supplies but very little singles.

### TerraCrux Games – [Click](#)

This store is the closest to the venue. You just have to hop on the Light Rail!

4



Thank you and we hope to see you in Seattle!



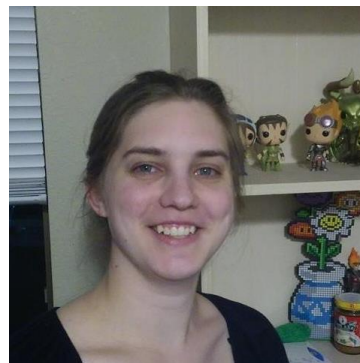
**Ronald Thompson**  
Project Lead, Transportation Expert  
425-341-3543



**Greg Peloquin**  
Tacoma Expert  
gpelly81@gmail.com



**Zach Robinson**  
Seattle Expert  
425-985-1056



**Kelly Shoemaker**  
Artist  
kellydshoemaker@gmail.com

