

GRAN PRIX BOLOGNA 2016



TRAVEL GUIDE

CREATED BY : Federico Calò & Davide Succi (TEXT) Anna Cotti (LAYOUT)

I N D E X

INTRODUCING BOLOGNA	2	VENUE & ACCOMODATION	16
GENERAL INFORMATION	3	-Location and surroundings	16
-Emergency numbers	3	-Getting there	17
-Weather	4	-Hotels	18
-Electricity	5	TOURIST INFORMATIONS	20
-Language	6	-Places to visit	20
-Money	6	EATING IN BOLOGNA	22
ARRIVING IN BOLOGNA	7	-Traditional dishes	23
-By plane	8	-Suggested restaurants	26
-By train	9	NIGHTLIFE IN BOLOGNA	27
-By car	11	MAGIC IN BOLOGNA	28
GETTING AROUND THE CITY	12	MAGIC LOCAL JUDGES	29
-Public transportation	12		
-Taxi	13		
-Car	14		

INTRODUCING BOLOGNA

Located in the center/north of Italy,
Bologna is the capital of the Emilia-Romagna region,
but it is best known as the food capital in Italy.



GENERAL INFORMATION

Telephone country code: +39

Time zone: Central European Time (CET) – UTC+1
(the same as most of Western Europe)

EMERGENCY NUMBERS

Sanitary emergency: 118

Fire emergency: 115

Police: 112

Time and date format: 24-hour clock
(0:00 – 23:59), dd/mm/yy (or yyyy)

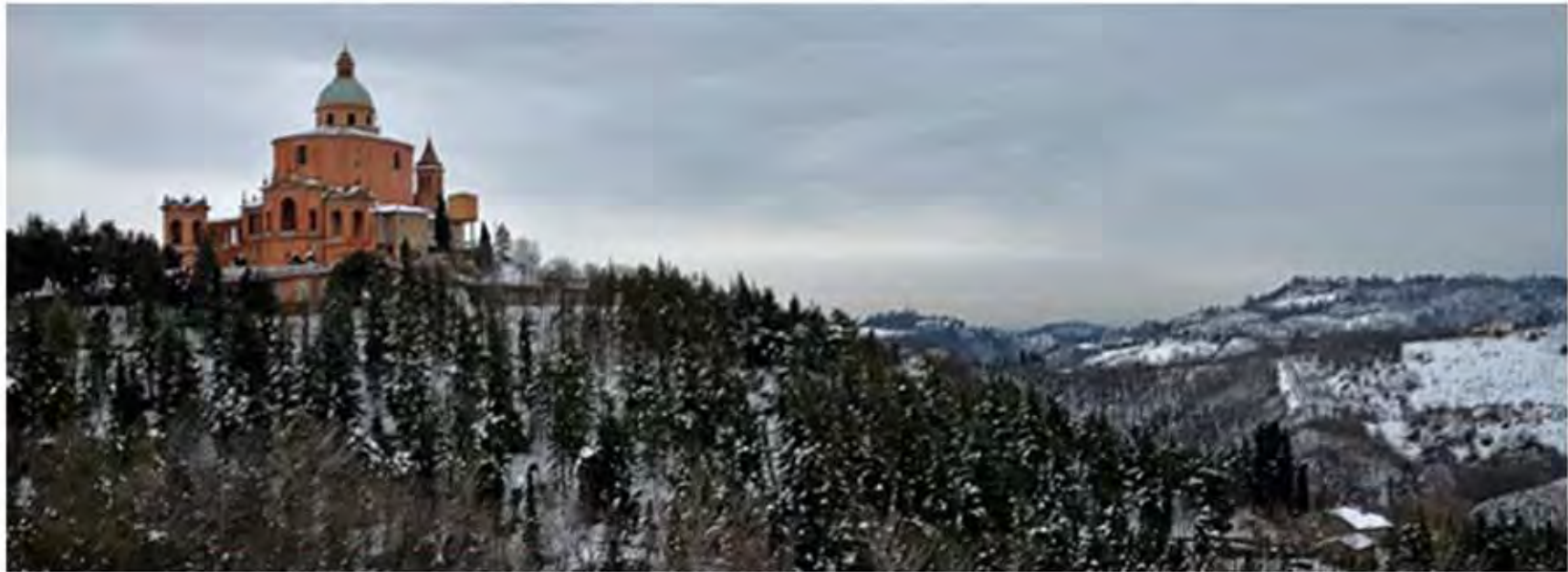
GENERAL INFORMATION

WEATHER

At the beginning of March is still winter in Bologna and temperature are usually around 9°C during the day and can easily go around or below 0°C during the night. Snow is not uncommon during that period, but it usually last for a couple of days before

melting.

But March is locally known as a “crazy” month, and the weather can change very quickly, going from winter to spring, thus it's highly recommended to check the weather forecast before leaving.



GENERAL INFORMATION

ELECTRICITY

In Italy all plugs provide 220V 50Hz AC power, which should be good for most european equipment, but probably also for other countries, as most devices today have power adaptors that can be used with a wide range of voltage power.

In most places you'll find two different type of sockets:

Type F: standard euro socket, also known as Schuko, will fit also type C (phone chargers) and type E (French) plugs. Even if in vuse, it is not very common and it is not guaranteed that you'll have one of this in the room. Type L: also called Italian socket, it is the most common you'll find in hotels room. It will also fit Type C plugs (most common for phone chargers), but if you have a Type F

plug (most common in laptops), you will need an adaptor. There is also a 16A version of this, that have the prongs thicker and more spaced and is practically useless as there are currently no devices that use that plug. It is not very common any more, but don't be surprised if you find one and your phone charger doesn't fit.



Type F: This socket also works with plug C and E



Type L: This socket works with plug C

GENERAL INFORMATION

LANGUAGE

Generally the level of english speaking in Italy is low, by the way you shouldn't have any problem in hotel, train station, airport and wherever you asking information to young people.

MONEY

Italy is part of the European Union, and the corrent currency is the Euro.



ARRIVING IN BOLOGNA

Bologna is a central city in Italian transportation system. Most highways and railways that connects north with south Italy cross here.

The airport is very well connected by a lot of airlines with most big airport in Europe and it has also a lot of cheap flights run by low cost companies.



ARRIVING IN BOLOGNA

BY PLANE

Bologna Guglielmo Marconi Airport (BLQ) is located 6km north-west from the city center. All flights operate from the same terminal. You can get from the airport to the city center using the shuttle bus service Aerobus (<http://aerobus.bo.it/en>). It runs from 5:30am to 12:15 am and it will take approximately 15 minutes to get to the city center, depending on the time of day and on traffic conditions. A one way ticket costs 6€ and can be bought online or directly on the bus. There are two different stops you can get

of on route to the city center (Pontelungo and Ospedale Maggiore, but you probably won't need those), and two stops in the city center: Mille, near to the actual city center, and Stazione Centrale, at the central train station. If you are not comfortable with the bus, it is possible to take a taxi to your final destination. A one way trip to the city center will be around 18-20€, depending on traffic condition. You can find both taxis and aerobus outside the terminal on the ground floor.



ARRIVING IN BOLOGNA

BY TRAIN

Bologna railway station is one of the most important in Italy. From here you can get a direct train to most cities in Italy. There are high speed connections to Milan (50 minutes), Florence (30 minutes), Rome (2 hours), Naples (3 hours and 30 minutes) and Venice (1 hour and 25 minutes). If you are flying to another city airport you can easily get to Bologna by train. Tickets can be bought directly at all train stations and online on the Italian railways web site

<http://www.trenitalia.com/tcom-en> where you can also check all train schedules. All high speed trains have to be booked, but this can be done even a few minutes before train departure. Local trains usually do not allow seat reservation, but you need to find an empty seat when you get on the train, or stand in the aisle if the train is full. All tickets for a specific train (with or without a reserved seat, but with a train number, date and hour) are usually valid for that train only. Generic



ARRIVING IN BOLOGNA

Ticket (issued at the train stations for a specific route, but without a set date and hour), need to be validated on before getting on the train, using machines available on the platforms.

If you are travelling to/from Turin, Milan, Florence, Venice, Rome or Naples there is also an alternative company running high speed trains: Italo

(http://www.italotreno.it/?sc_lang=en). It is always best to check also their website for schedule and prices, as sometimes the might be cheaper than the previous ones.

Be aware that for high speed trains buying the ticket in advance will get you better fares than buying it last minute.



ARRIVING IN BOLOGNA

BY CAR

Bologna is very well connected with Italian highway system. There are four highways crossing in Bologna:

- A1 from Milan. You'll arrive from this direction also coming from Austria through A22
- A13 from Padova
- A1 from Naples/Rome/Florence
- A14 from Bari/Ancona/Rimini

There are also various exits in Bologna, depending on where you go. All of the exits will take you to a freeway that cross the city from east to west ("Tangenziale"), except for one that goes directly to the venue (Bologna Fiera). See "Getting there" in the "Venue and Accomodation" section for directions to the venue.



GETTING AROUND THE CITY

PUBLIC TRANSPORTATION

To move around Bologna you can use the public Bus system, that covers most part of the city and it is usually efficient, even if in peak traffic hours the trip might be delayed. The bus company website has a Google Transit based service that can be used. It is only available in Italian, but shouldn't be difficult to understand: <http://www.tper.it/transit>

To use the bus there are mainly two options:

- hourly ticket: this tickets can be used to travel on different buses for 75 minutes. They can be bought in all newsstand and tobacco

shops and costs 1,30 € and must be validated after getting on the bus. They can also be bought directly on the bus, but it will cost 1,50 € and can be bought only with coins from a ticket machine that will not provide change. in shops you can also find a 10 tickets carnet for 12 €, that can be shared by different people, just ask for a “City pass”; it looks like a single ticket, but can be validated 10 times.

- daily ticket: this is valid for 24 hours and can be bought in the same shops for 5 €.



GETTING AROUND THE CITY

TAXI

Taxis are not frequently used by local residents and it is very difficult to find a taxi wandering around the city to be stopped. You'll need to go to a taxi stand located in specific places (airport, train station, city center, ...) or you can call one by phone. There are different companies running taxi service in Bologna, but all of them are white cars with a taxi sign on the roof.

To call a taxi use one of these numbers:

COTABO

(<http://www.cotabo.it/>)

+39 051 372727

RADIO TAXI CAT

(<http://taxibologna.it/?lang=en>)

+39 051 4590

UBER

Unfortunately Uber is not operative in Bologna.



GETTING AROUND THE CITY

CAR

If you plan to move around the city by car here are some useful information. Most of the city historical center is accessible only by residents. You'll find specific signs to tell you where you can't go, and there are cameras that will register cars entering limited traffic zones. If you have an hotel in the limited traffic zone they might provide you with a temporary pass to enter the city center to reach the hotel.

There are also lanes and streets reserved for buses. All bus lanes are delimited by yellow lines on the street and are frequently controlled by cameras for infractions.

Parking is available all around the city. In most streets near the city center there is metered parking. Wherever you see blue lines you'll need to find a parking meter to pay for the stay. Fare is different depending on city areas. Parking is usually free on sundays and



GETTING AROUND THE CITY

holidays and payment is due only in specific hours of the day (usually not during the night). The meter will give you a receipt you have to put in the car visible from the front. Yellow and white lines means that the parking area is reserved (white for resident and yellow for specific cars), so no parking if those places.

If there are no lines and no forbidden parking signs, parking is free.

Around the venue you can park on the streets on the blue parking lots, or in specific parkings shown on the venue map. Parking during the GP will have a fixed rate of 5 € per day.



VENUE & ACCOMMODATION

LOCATION AND SURROUNDINGS

The GP is going to be run in the Bologna Fiera Exhibition Centre

(<http://www.bolognafiere.it/en/home>).

It is a big fair district in Bologna and there will be other shows running during the same day. The GP is going to take place in pavillion 33 using the entrance “Sud Moro”.

It is usually not possible to enter from the other gates and move inside the exhibition centre.



VENUE & ACCOMMODATION

GETTING THERE

Some information can also be found here:

<http://www.bolognafiere.it/en/pfiera/comearrivare>

BY BUS

The bust stop that serves the GP will be “Fiera A. Moro” and it is served by bus 38/39 (same line going in opposite directions) and 28. There is also line 35 that stop there, but it is a school bus and doesn’t run on sunday and saturday afternoon.

From the train station use bus number 38 or 35. To go back to the train station use bus number 39 or 35

To and from the city center use bus number 28 (check with the driver the direction it is going!).

SCHEDULE

Both bus 38 and 39 runs every day from 5:30 to 20:30, more or less every 20 minutes on monday-friday and 30 minutes on saturday and sunday.

Bus 35 runs from 6:30 to 20:00 from monday to friday and from 6:30 to 14:00 on saturday, no service on sunday

Bus 28 runs every day from 6:00 to 20:40, more or less every 10 minutes from monday to friday and every 15 minutes on saturday and sunday.

VENUE & ACCOMMODATION

HOTELS

The staff hotel is Savhotel, located near the venue (<http://www.savhotel.com/en>). They also have a promotional fare for everyone attending the GP of 99€/night for a double room.

The following map shows the location of the hotel and the path to the venue:

Other hotels within walking distance of the venue:

Hotel Bologna Fiera

http://www.unawayhotels.it/en/unaway_bologna_fiera/bologna_fair_hotel.htm

Novotel Bologna Fiera

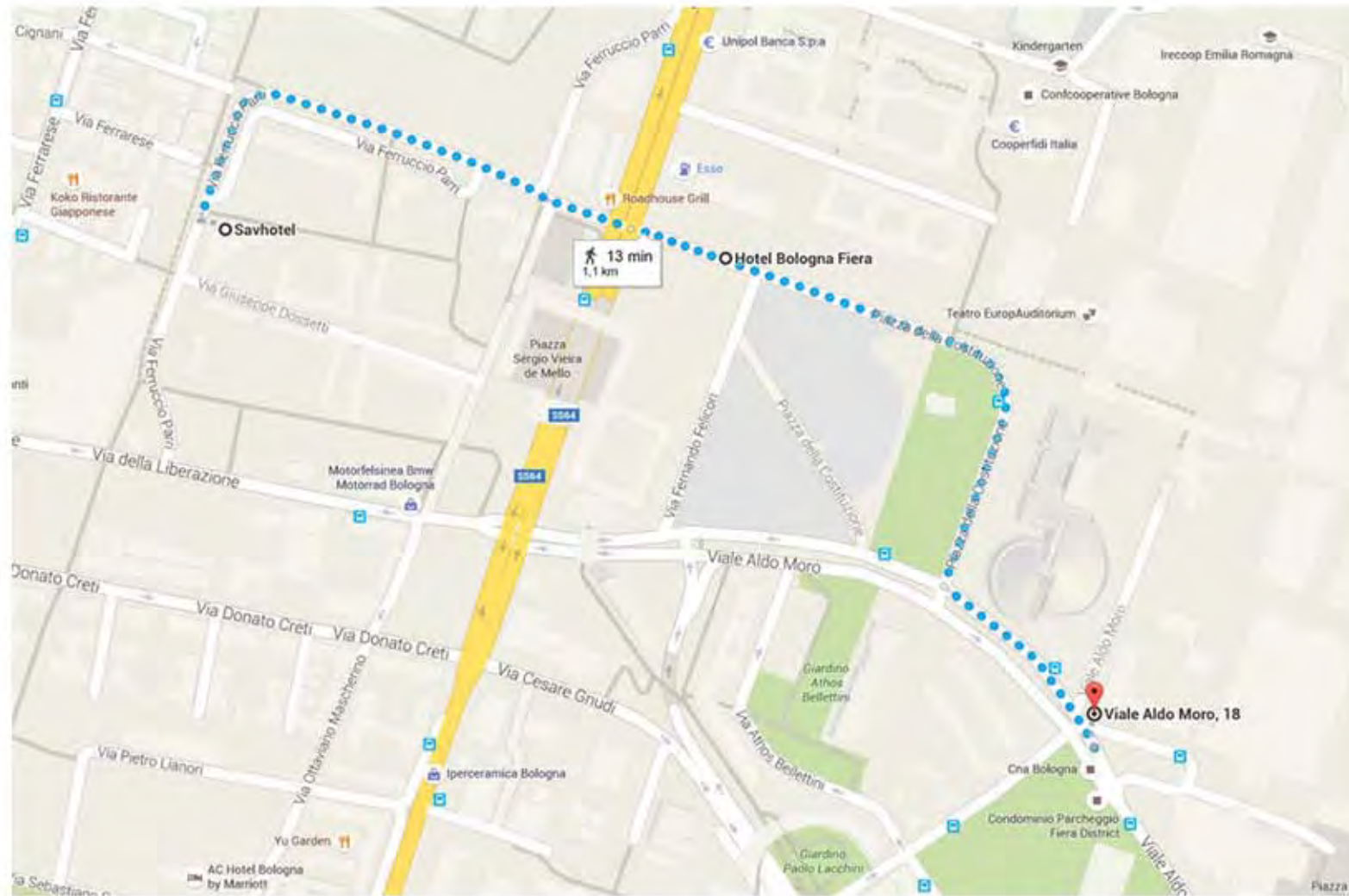
<http://www.novotel.com/en/hotel-5172-novotel-bologna-fiera/index.shtml>

Hotel Michelino

<http://www.hotelmichelino.it/en/>



VENUE & ACCOMMODATION



TOURIST INFORMATION

PLACES TO VISIT

LE DUE TORRI

Bologna is the “city of the towers”, between the XII and the XIII century the number of the towers in the city was more than one hundred, today only 24. The two most famous are “Le Due Torri”, the symbol of the city.

You can go inside the tower and after a long climb you could have the opportunity to see a fantastic view of the entire city.

SAN PETRONIO & PIAZZA MAGGIORE

Piazza Maggiore is the central square of Bologna, a very cool place in particular if you visit it after the sunset, The Basilica of San Petronio is the main church of Bologna. It dominates Piazza Maggiore. It is the fifteenth largest church in the world, 132 metres long and 66 metres wide, while the vault reaches 45 metres inside and 51 metres in the facade.



TOURIST INFORMATION

QUADRILATERO E SANTA MARIA DELLA VITA

The “quadrilatero” is considered the food quarter inside the city center. It is a small quarter between the Two Towers and Piazza Maggiore, made of small streets. Wandering around you’ll find old food shops, but also small restaurants where you can taste all kind of food. If you want to take home some food, this is the right place to go. Hidden between the small streets you’ll find the church Santa Maria della Vita. Built in the 13th century, houses the terracotta sculptures Compianto sul Cristo Morto by Niccolò dell’Arca.

SAN LUCA E IL PORTICO

Above an hill near the city center there is The Sanctuary of the Madonna of San Luca. If you are brave and the strain doesn’t scare you try the walk along the Portico of San Luca, that is one of the longest arcades in the world. The arcade is 3.5 km long and has 666 arcades. It connects the Porta Saragozza with the San Luca Sanctuary, on Colle della Guardia. Someone says that if you express a wish at the start of the walk, the wish will come true if you reach the top of the hill.



EATING IN BOLOGNA

Bologna is famous all around the world for the good food. Recently Forbes defined Emilia-Romagna the “Italy's Greatest Gastronomic Treasure” and Bologna is the capital of this region.

There are plenty of different local food you can try and you'll probably not have time to try everything.

We'll try to list the main one you really don't want to miss, but there is a lot more to try. Unfortunately there are no good typical restaurants near the venue, but you just have to reach the city center to find a lot of good places.

EATING IN BOLOGNA

TRADITIONAL DISHES

TAGLIATELLE AL RAGU'

Ever heard of Spaghetti Bolognese? Well, those doesn't exists at all, but are based on this typical dish from Bologna. It is made of flat egg noodles dressed with a meat tomato sauce. If you go to a good restaurant, the noodles will be handmade by the cooker.



TORTELLINI

You probably already heard about tortellini, but you never really had real ones unless you have eaten in Bologna. Also tortellini should be handmade to be really good and real restaurants will only serve them only in broth or, for the children, with cream.



EATING IN BOLOGNA

GRAMIGNA CON SALSICCIA

Not so well known as other first courses listed in the guide, it is probably the one hidden gem in Bologna cuisine that you'll never find anywhere else in the world.



LASAGNE

Last but not least the king of first courses typical from Bologna: Lasagne. Made with green pasta layers alternated with meat tomato sauce, parmesan cheese and besciamella, this is the original recipe you'll find only here in Bologna.



EATING IN BOLOGNA

COTOLETTA ALLA BOLOGNESE

It is difficult to describe the delicious recipe, you really have to try it. A veal steak, breaded and fried, then pan fried covered with parma ham and cheese.

TIGELLE E CRESCENTINE

(with mortadella and other salami)

Emilia romagna region is famous for the cured

pork meat. There are lot of them and in Bologna you can taste various kind. The most famous is probably mortadella and bread stuffed by it is one of the best street food you can find here. In restaurants it is common to have served a mixed plate of cold cuts (salame, parma ham, mortadella, ...) as appetizer or even as a full meal, served with “crescentine” (fried bread) and “tigelle” (round flat bread).



EATING IN BOLOGNA

SUGGESTED RESTAURANTS

LAMBRUSCO

(www.lambruscobologna.it)

Probably the only good restaurant within walking distance from the venue, here you can find good pasta and crescentine e tigelle with mixed cured meat and cheese.

ANTICA TRATTORIA DELLA GIGINA

(www.trattoriagigina.it)

One of the most famous restaurants in Bologna. Here you can eat all the specialties of the Emilian cuisine, in particular “Le Mitiche Tagliatelle al Ragù”, maybe the best tagliatella in the whole city.

OSTERIA SATYRICON

(www.osteriasatyricon.com)

If you are searching for something particular Osteria Satyricon is the right place.

RANZANI 13

(<http://www.ranzani13.it>)

Is a Pub and Pizzeria where you can choose from a wide selection of beers and pizzas all prepared with selected ingredients.

TORTELLINO TAKE AWAY

(<http://tortellinobologna.com/en/>)

A traditional restaurant quality dish in a takeaway format, ready to eat or prepare at home. Recognised by Gambero Rosso, it is a well-priced and fast lunch and dinner alternative.

FIORDALISO CAFFETTERIA **FOR CELIAC**

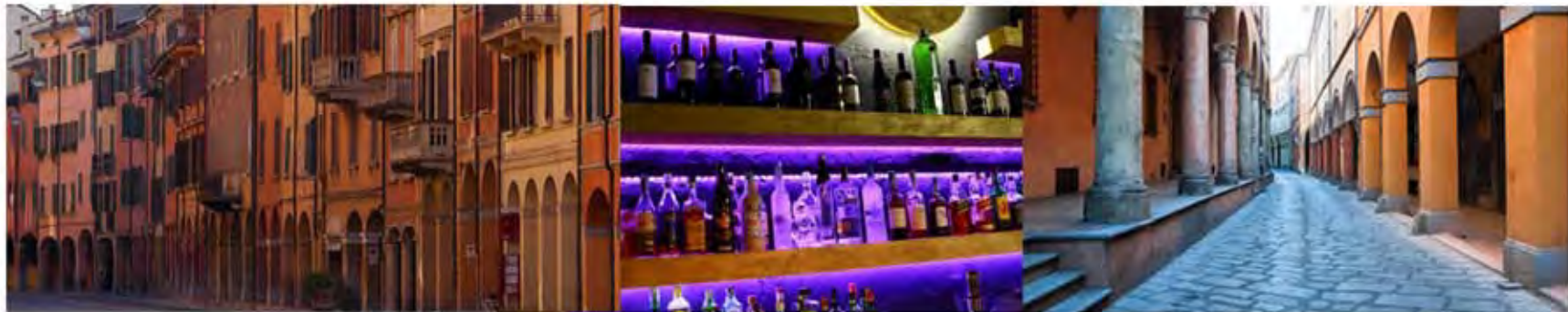
Via Nazario Sauro, 8/D, 40121 Bologna

A little place very sophisticated and modern in the center where you can enjoy breakfast, lunch and drink. All products are GLUTEN FREE.

NIGHT LIFE IN BOLOGNA

The vibrant student community of Bologna fuels a lively nightlife scene that can be every bit as radical as the city's politics. There are plenty of nightclubs, discos and live music venues, with a smattering that remain open until 04:00. Good areas for nightlife are the student quarter (via Zamboni hosts various low budget restaurants and pubs), the streets around the main square and Via del Pratello, which has long been a meeting place for night owls.

Bologna Web Night (www.bolognawebnight.it) offer English listings of nightlife, restaurants, sports and other events, as do listings magazine 2night (www.2night.it) and Bologna Spettacolo, available from newsstands. The periodical A Guest of Bologna is free in most hotels and tourist offices and shares the city's highlights.



MAGIC IN BOLOGNA

LOCAL GAME STORE

📍 WONDERLAND

Via Galliera, 64

<http://www.wonderlandgames.it/>

📍 GOBLIN

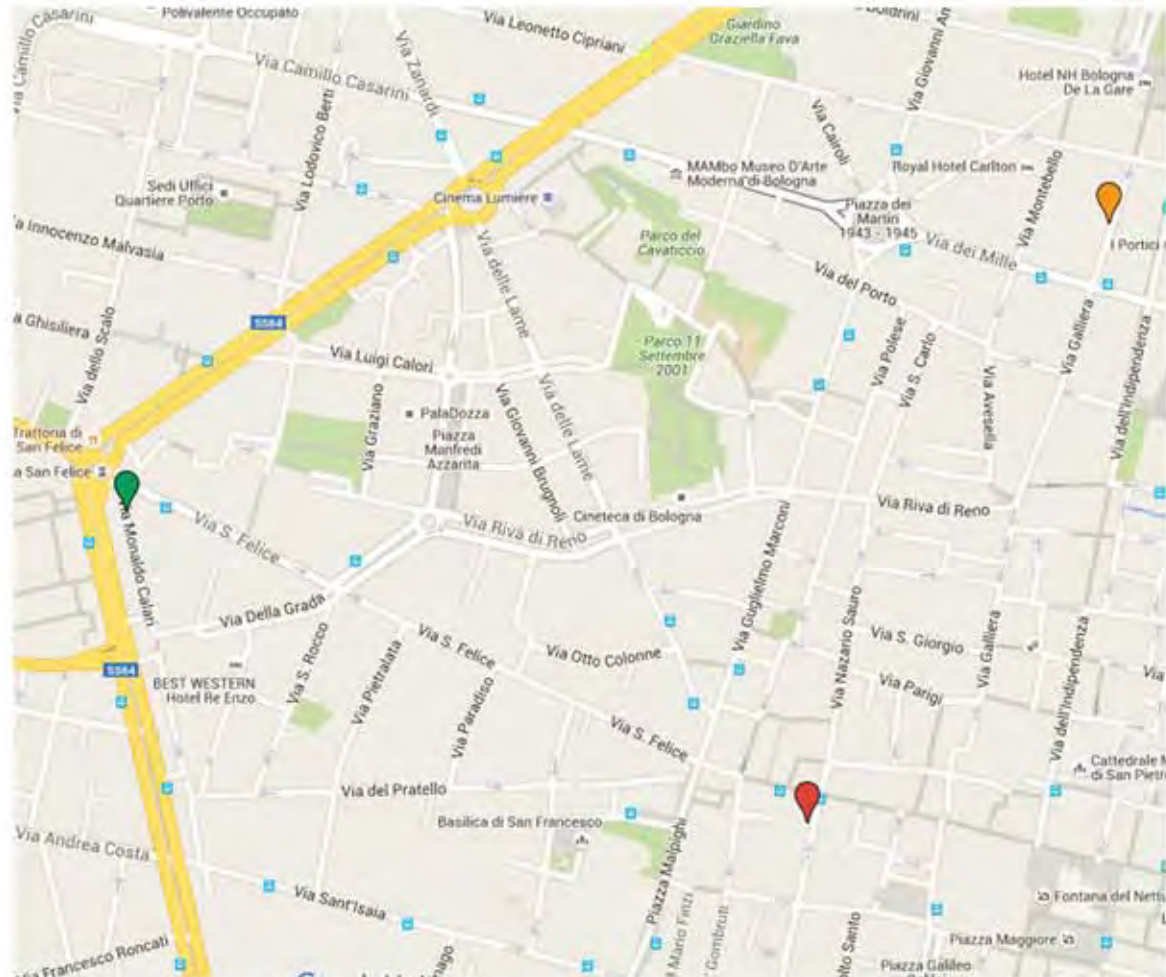
Via Cesare Battisti, 3A

<http://www.goblinclub.it/>

📍 GAMES ACADEMY

Via Monaldo Calari, 23

<http://www.gamesacademy.it/bologna-2/>



MAGIC LOCAL JUDGES

If you need more informations or help contact us!

Davide Succi

+ 39 338 711 5882

Federico Calò

+ 39 335 837 0376

Anna Cotti

+39 348 905 8194





see you soon in

G R A N P R I X
BOLOGNA 2016

TEXT - Federico Calò - Davide Succi
LAYOUT - Anna Cotti