

MAGIC

The Gathering®

GRAND PRIX LOUISVILLE

September 9-11, 2016

Format: Team Sealed



By Vicki Knoer

Table of Contents

Welcome	3
Contact Numbers (GP-related numbers and Emergency numbers)	3
About Louisville (for those out of the country)	4
The Venue	5
Directions	6
Hotels	8
Food	9
Drinks	11
Explore Louisville	12
LGS	15



The "Big Four" pedestrian bridge across the Ohio River

Welcome to Louisville!

Located on the bank of the Ohio River, Louisville is the largest city in Kentucky, with about one and a quarter million people living in the metro area (including southern Indiana). Louisville is also the home of the world-famous horse race, The Kentucky Derby, and namesake of the Official Bat of Major League Baseball - the Louisville Slugger.

There are many correct pronunciations of "Louisville," from LOOey-vil to LOOuh-vuhl to LU-vul, but pronouncing it like "Lewisville" is generally considered incorrect.

Louisville is known as the Southernmost Northern City, or the Northernmost Southern City of the US and is a confluence of northern industry and southern hospitality.

Contact Numbers

GP-Related

Head Judge	L3 Carlos Ho	carloshod@gmail.com
Judge Manager	L3 Benjamin McDole	(813) 484-8172
Tournament Organizer - TJ Collectibles	Tom Shea	(509) 404-8245 Tom@tjcollect.com
Local Judge	L2 Trevor Willison	(502) 552-4422 (texts only, mention "judge" and your name)
Local Judge	L1 Vicki Knoer	(502) 471-1716 DanicaShardae201@gmail.com

Emergency Services

For emergency services, call **911**. From there an operator will ask your location and emergency

For non-emergencies, use the following contact information.

Police - (502) 574-7060 633 W. Jefferson St, Louisville, KY 40202

Fire - (502) 574-3701 1135 W. Jefferson St, Louisville, KY 40203

Hospitals

Norton Audubon Hospital (closest to venue)

(502) 636-7111 1 Audubon Plaza Dr, Louisville, KY 40217

University of Louisville Hospital

(502) 562-3000 530 S Jackson St, Louisville, KY 40202

About Louisville

Currency - Stores in Louisville only accept USD (\$). The Louisville Airport offers currency conversion at the Fifth Third bank on the upper floor. Nearly all shops in Louisville accept credit cards, even small booths/stands. The Visa, Mastercard, and American Express will always be accepted, but it would be good to check if you have a foreign card. There are no ATMs at the venue, but all banks and many upscale hotels should have one available. Visitors banking with Deutsche Bank should know that they don't pay a transaction fee for withdrawing from Bank of America ATMs.

Electricity - Electricity in the US runs at 120 volts at 60 cycles. Most foreign visitors will need both an adapter and converter.

Time Zone - Louisville is located on the very western edge of Eastern Daylight Time (UTC -0400). Sunrise will be at about 7:30am and sunset at 8pm.

Weather - September in Louisville is hot. Average highs are around 82 F (28 C) and average lows are around 60 F (15.5 C), but days can go as high as 90 F (32 C) and nights as low as 55 F (13 C). Louisville is also a fairly humid city so be prepared for it to feel even hotter.

Smoking - Louisville has a smoking ban for all indoor locations, including bars.

DO NOT SMOKE INDOORS. This ban is enforced and you will be asked to either stop or leave. If you would like to smoke, there are always marked smoking locations nearby and you can ask an employee to direct you to the nearest.

Drinking - The drinking age in Louisville, as in all the US, is 21. You must have a photo ID if you look anything under 40.

Safety - Louisville is a fairly safe city, particularly during the day. You probably don't want to hang around the west end of town (West of 9th St) after dark, but even then nothing is likely to happen. The greyhound bus station does have occasional professional scammers and panhandlers, so take care. Other than that, use common sense and you shouldn't have to worry. The Highlands (see Explore Louisville section) is particularly safe for an evening out.

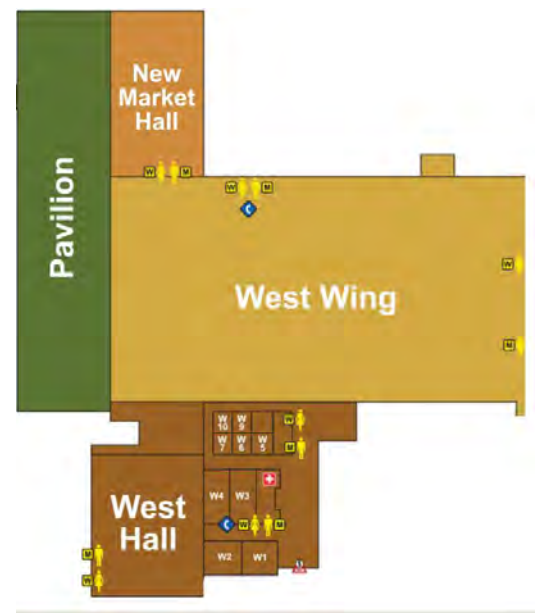
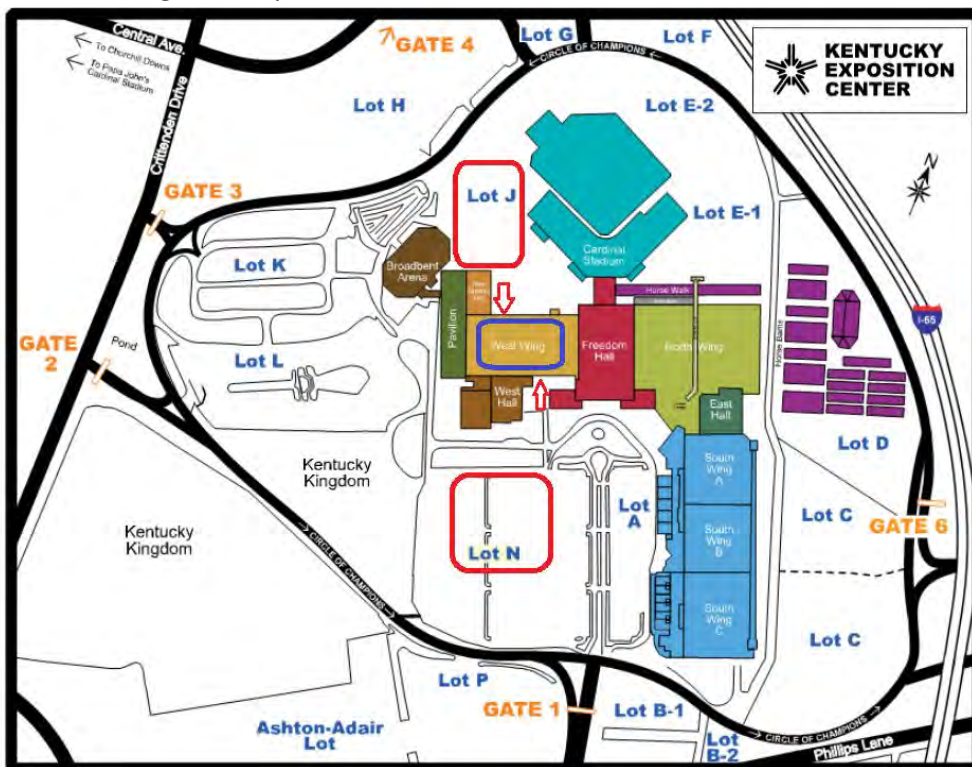


The Spirit of Jefferson Riverboat

The Venue



The Kentucky Exposition Center (also known as the Fairgrounds) is one of Louisville's largest event venues. The GP will be located in the West Wing. The entire fairgrounds are encircled by parking lots and a one-way road running counterclockwise around everything, called Circle of Champions. You will find most convenient parking in either Lot N at the front of the building, or Lot J at the back of the building. Parking costs \$8 per car for all day parking. If you find/have a place to park just outside the fairgrounds, you can walk in for free.



Directions

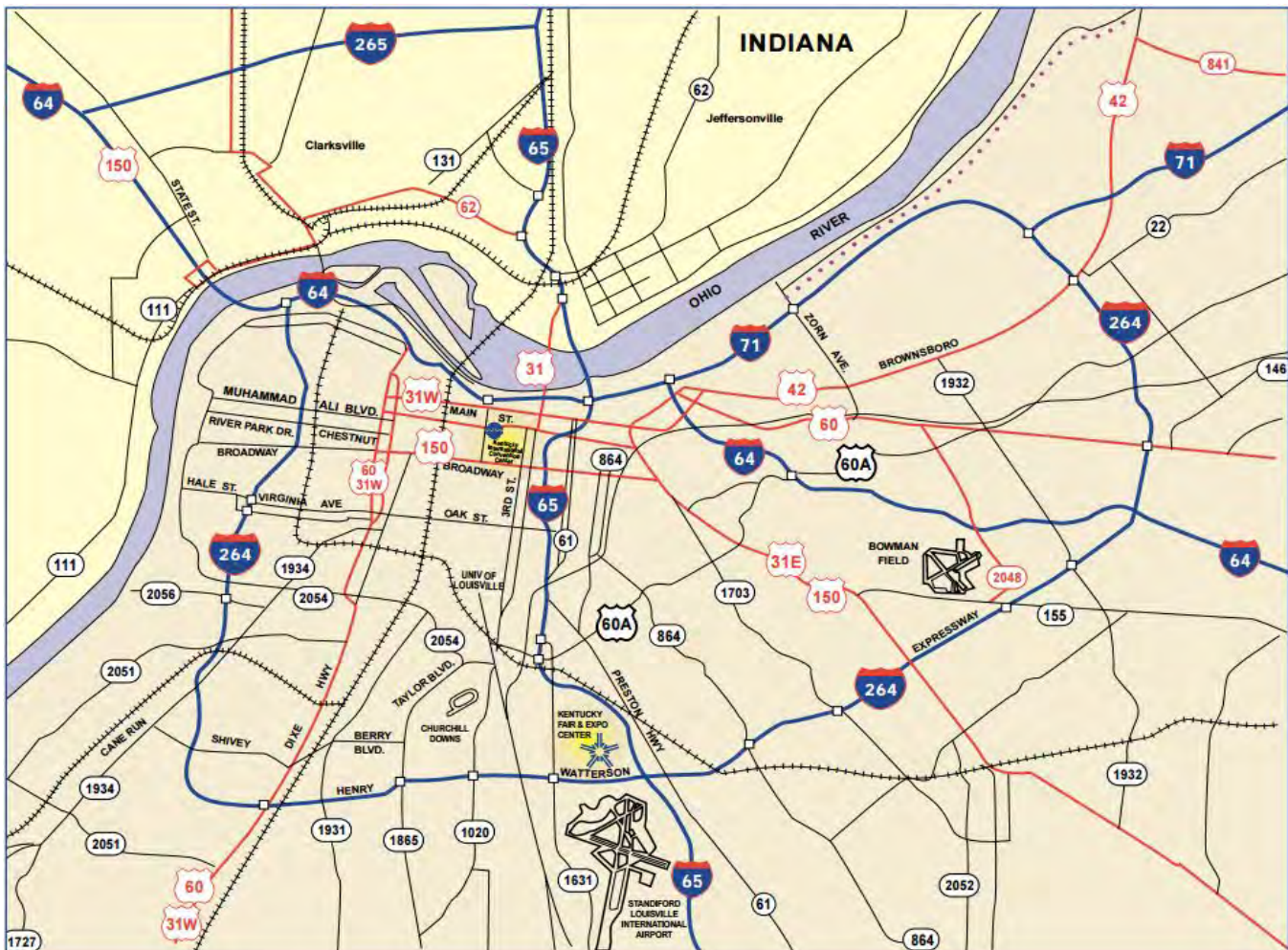
Louisville has been building a new bridge across the Ohio for the past few years, and some exits have been closed to accommodate this. The city government partnered with Waze (traffic app) to keep routes updated. Waze is guaranteed to have the most updated information on road/exit closures, though Google Maps is usually pretty good as well.

The following major exits are projected to be closed during the GP, so check the Ohio River Bridges project online for updates. I'll try to remember to send out some updated info at the beginning of September.

Ramp from I-65 South to I-64 West

Ramp from I-65 South to I-64 East and I-71 North

Ramp from I-64 East to I-65 North



From Airport

The Expo Center is located across the highway from the Airport. If your hotel is near the Expo Center, they may have a shuttle service between the airport and hotel. Contact your hotel for information. All others will want a taxi, since there is no good walking route between the airport and Expo Center. You can easily find one waiting outside.

From I-65 Northbound

Exit at the Fair / Expo Center (Exit 131 B) and follow the signs to Gate 1, the main entrance.

From I-65 Southbound

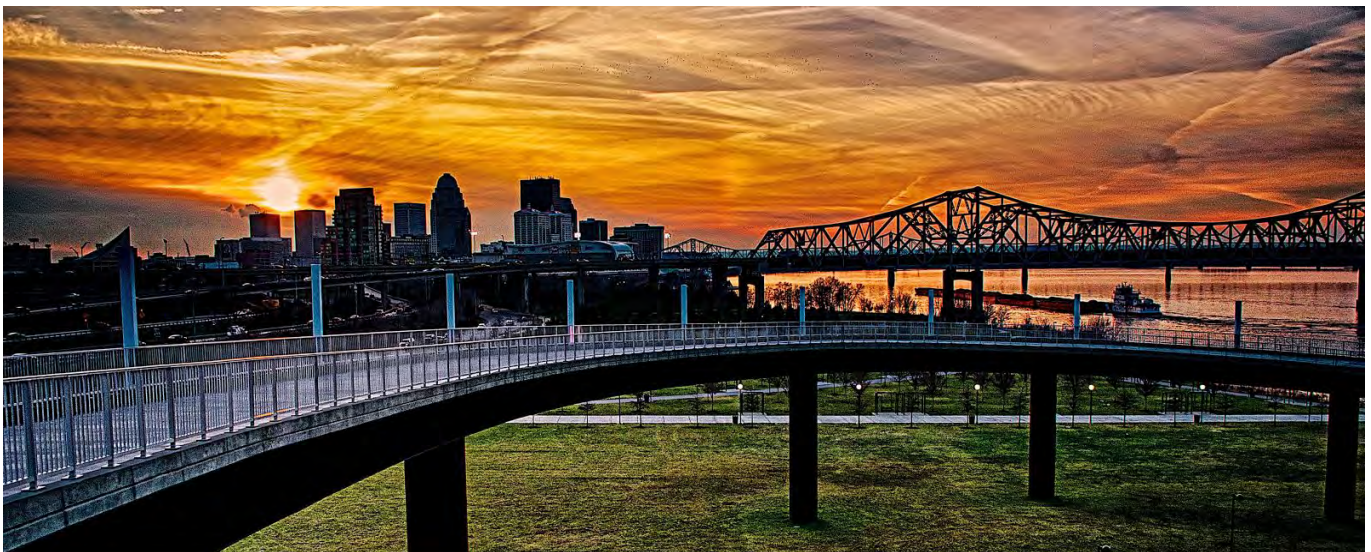
Take Exit 132 to Crittenden Drive and merge to the far left after passing through the first stoplight. Gate 4 to the Fair/Expo Center will be directly on the left past the Cracker Barrel restaurant. Or, continue along Crittenden Drive to Gates 3 and 2, which will be on the left. To enter Gate 1, the Main Gate, go past Exit 132 and continue to Exit 131 B approximately 1/4 mile down I-65. Follow the Fair / Expo Center signs to the Main Gate.

From I-264 Westbound

Exit at the Fair / Expo Center (Exit 11) and follow the signs to Gate 1 the main entrance. Or, proceed further to Crittenden Drive to enter Gates 2, 3 or 4. Exit 12 is Preston Highway (Route 61). Take a right off the exit and follow Preston to Gate 6, which will be on the left between Sleep Inn and Thornton's Gas Station.

From I-264 Eastbound

Exit at the Fair / Expo Center (Exit 11) to Crittenden Drive. Proceed to Gates 2, 3 and 4 which will be on the right. Or, continue past the Crittenden Drive exit to I-65 and Fair / Expo Center (Exit 12) and follow the signs to Gate 1, the main entrance.



Downtown Waterfront

Hotels

There are a number of hotels within walking distance of the Exposition Center.

Ramada Louisville Expo Center has free Wi-Fi, continental breakfast, and pool access. It's rated 3.5/5 on Trip Advisor, is .4 miles from the Expo Center, and costs \$68 a night.

2912 Crittenden Dr, Louisville, KY 40209

(502) 637-6336

Four Points by Sheraton Louisville Airport offers free pool access, fitness center, Wi-Fi, and shuttle to/from airport. Trip Advisor rates it 3.5/5, it's .5 miles from the Expo Center, and costs \$84 a night.

2850 Crittenden Dr, Louisville, KY 40209

(502) 753-5555

Hampton Inn Louisville Airport has free fitness center and outdoor pool access, in-room internet access, and hot breakfast in the mornings, as well as shuttle service to/from the airport. It's rated 4.5/5 on Trip Advisor, is .75 miles from the Expo Center, and costs \$115 per night.

800 Phillips Ln, Louisville, KY 40209

(502) 366-8100

Hilton Garden Inn Louisville Airport features free Wi-Fi, airport shuttle service, fitness center, and indoor pool. It also serves hot breakfasts and dinner (not free). Trip Advisor rates it 4.5/5, it's .75 miles from the Expo center, and it costs \$129 per night.

2735 Crittenden Dr, Louisville, KY 40209

(502) 637-2424

If you don't mind driving to the venue, these two hotels are close to many attractions downtown.

Hampton Inn Louisville Downtown has free fitness center and outdoor pool access, in-room internet access, and hot breakfast in the mornings. It's also in the middle of downtown and within a 15 minute walk of everything interesting downtown. It's rated 4/5 on Trip Advisor, and costs \$145 per night.

101 E Jefferson St, Louisville, KY 40202

(502) 585-2200

For those of you looking to really dive deep into Louisville's history and enjoy the best the city has to offer, check out **The Brown Hotel**. This 4-star hotel in downtown Louisville is known for it's luxury, history, and hospitality. It features several in-house bars and the English Grill Restaurant, where the legendary "Hot Brown" open faced sandwich was created. When you pre-pay, you can expect \$217 for a single-bed room, and \$225 for a double.

335 W Broadway, Louisville, KY 40202 (502) 583-1234



Food

Near the Venue

At the GP, you can expect pizza, fried chicken, nachos, hamburgers, fries, ice cream, and similar food options. None of it is cheap, so I'd recommend also bringing your own snacks. All restaurants within walking distance from the venue are accessible using Gate 4 (use rear exit from West Wing). 0.6 mi

Cardinal Cafe - University of Louisville themed fast casual restaurant serving American food.

2745 Crittenden Dr

Cracker Barrel - Southern style American comfort food.

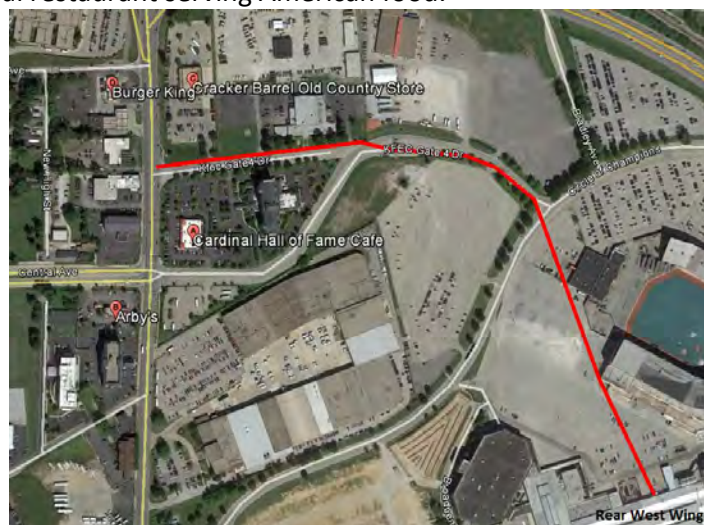
2701 Crittenden Dr

Arby's - Fast food roast beef sandwiches.

2804 Crittenden Dr

Burger King - Fast food hamburgers

2700 Crittenden Dr



Restaurants around Louisville

Budget

Spinelli's Pizza - Philadelphia Pizza. Open Late (until 5am)

6101 Preston Hwy (502) 961-7072

614 Baxter Ave (502) 568-5665

J. Gumbo's - Cajun food. Gumbo, Jambalaya, Etouffee, ect.

All meals \$6.

2109 Frankfort Ave (502) 896-4046

1057 E Washington St (502) 217-0096



Twig & Leaf - Classic American Diner. In the Highlands (see Explore Louisville section).

2122 Bardstown Rd (502) 451-8944

WW Cousins - Dress your own Hamburger and Salad bar.

900 Dupont Rd (502) 897-9684



Shah's Mongolian Grill - Mongolian/Korean

Choose-your-own stir fry. Large portions \$7-\$9. Popular student hangout.

9148 Taylorsville Rd (502) 493-0234

Juanita's Burger Boy Diner - American Diner, open 24/7. \$3-\$6
1450 S Brook St (502) 635-7410

El Taco Luchador - Mexican. Tacos and Tortas. Near the Highlands (see Explore Louisville section). \$5-\$10.
938 Baxter Ave (502) 583-0440

Mid-Range (\$10 - \$30)

Ramsi's Cafe on the World - Very eclectic menu. Paella, curry, fajitas, pasta, falafel, etc. Vegetarian, vegan, and gluten-free available. Located in the Highlands (see Explore Louisville section)
1293 Bardstown Rd (502) 451-0700

The Irish Rover - Traditional Irish-American/British restaurant and pub. Family friendly, nice neighborhood.
2319 Frankfort Ave (502) 899-3544



Mayan Cafe - Mayan/Yucatan inspired food. Downtown location. Carnivore, vegetarian, vegan, gluten free, dairy free, dietary restriction modifications welcome.
813 E Market St (502) 566-0651

Havana Rumba - Cuban food. Plantains, chimichurri, ropa vieja, vaca frita. Live music
2210 Bardstown Rd (502) 749-4600

Troll Pub under the Bridge - American pub food, good drinks. Great location. Hidden exciting entrance under the 2nd Street Bridge downtown.
150 W Washington St (502) 618-4829



Upscale (\$20 - \$60)

Bistro Le Relais - Fine French Dining. Located in Bowman Field Air Terminal, but very high quality.

2817 Taylorsville Rd (502) 451-9020

Asiatique - French/Asian Fusion, fun bar scene. Located in the Highlands (see Explore Louisville section)

1767 Bardstown Rd (502) 451-2749

Volare Italian Restaurant - Italian Cuisine, extensive wine list.

2300 Frankfort Ave (502) 894-4446



Drinks

Louisville is known for its long bourbon history. I'll discuss The Bourbon Tour in the Explore Louisville section, but most bars will have a well-stocked bourbon selection.

Mint Juleps are a traditional local drink for the Kentucky Derby, made with Kentucky Bourbon, mint leaves, sugar, and crushed ice. Many bars do not serve Mint Juleps outside of Derby Week, but Maker's Mark Bourbon House & Lounge (on Fourth Street Live!) offers them year-round.



Please remember, smoking is not permitted indoors and it is enforced.

Molly Malone's - Irish pub with nice patio.

11am - 4am. 3900 Shelbyville Rd

Highlands Taproom - Neighborhood pub with live music most nights.

1056 Bardstown Rd

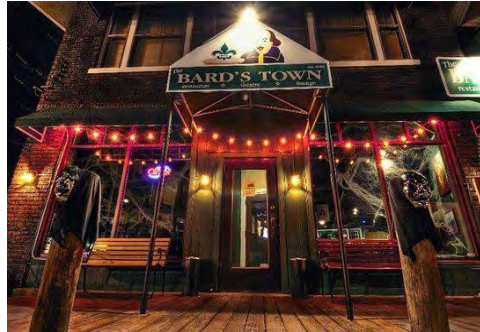
Nachbar - Cozy neighborhood pub, large beer selection with focus on German and Belgian beers. Sometimes has Jazz and films.

M-Sa 2pm - 4am Su 4pm - 4am. 969 Charles St



The Rudyard Kipling - Kentucky-style cuisine with live music and theater.
F, Sa after 6:30 pm. 422 W Oak St

The Bard's Town - Delicious tavern restaurant, live theatre/music/comedy nightly. Friday and Saturday will feature Karaoke. Located in the Highlands (see Explore Louisville section)
1801 Bardstown Rd



Explore Louisville

Louisville has a vibrant arts scene, fun nightlife, many interesting museums, and a long history in horse racing and bourbon. In addition, the city has a fantastic system of parks and beautiful historic architecture.



The Highlands is the cultural hub of Louisville and a very popular way to spend an evening out. The neighborhood features many local stores, coffee shops, bars, restaurants, and art galleries, and is best explored on foot. It's located along 2.5 miles of Bardstown Rd and Baxter Ave, between Broadway (north) and

Douglass Blvd (south). Along with the previous restaurants mentioned, there are many locally-owned and exciting places to eat and drink, and I heartily recommend checking it out.



Located in the Expo Center alongside GP Louisville is **Mecum Collector Car Auctions**. They will be showing collector cars and antique motorcycles Sept. 8-10. It is open to the public, and you may even want to wander over while on breaks.

Kentucky Kingdom - Located across the street from the Expo Center (5 min walking), Kentucky Kingdom is a great way to spend a day. It features both roller coasters and a water park. Unfortunately, late in the season the schedule is limited so it's only open Sept 3-5, or Sept 11. Tickets are \$45 for 1 adult.

The **Jeffersontown Gaslight Festival** kicks off Sunday, Sept 11 with the Gaslight Poker Rally. Various events including a Golf Scramble and 5k will happen during the week, culminating with a Parade on Thursday, Balloon Glow on Friday, Pipe-Smoking contest on Sunday sept 18, and general festival Friday-Sunday. More info can be found at <http://www.jtownchamber.com/gaslightfestival.aspx>

Museum Row (on Main Street, downtown) features several fun museums.



The Louisville Slugger Museum - see Louisville's baseball history, how Louisville Slugger baseball bats are made, and get a free mini-bat. \$14, or \$6 after 6pm Thu-Sun

Kentucky Science Center - A fun 'hands on' museum for both adults and children. Tuesday the 13th they will have science talks for those ages 21+. Previous topics included robots, surgery in O-G, and fungi. If you're in town on the 15th, they have a "Science of Brewing" adult exhibit with samples. \$13



Muhammed Ali Center - Museum and cultural center built in tribute to boxer Muhammad Ali. \$9

Frazier History Museum - Historical objects from last 1,000 years including Teddy Roosevelt's hunting rifle, family bible of the legendary pioneer Daniel Boone, the ivory-handled Colt pistols of General George Armstrong Custer, and other american history. Recently opened a History of Bourbon exhibit. Traveling exhibits feature art by Julius Friedman, and Decorative Art and American Culture: Native American and Colonial designs. \$12

Churchill Downs/Kentucky Derby Museum is the world's nexus for thoroughbred horse racing, and home to the Kentucky Derby. You can visit the racetrack or Derby Museum any time, and for those of you staying a little longer, live races will be held the weekend after the GP. \$15



Belle of Louisville - How often in your life will you get a chance for a ride in a real, steam-powered steamboat? The Belle is the oldest operating steamboat in the United States. The Belle offers Sightseeing/Lunch cruises every Saturday 11:30-2, and Sightseeing/Brunch cruises every Sunday 12:30-3. For more convenient times, her sister ship The Spirit of Jefferson holds sightseeing/lunch/dinner cruises at 11:30-2, and 6:30-9pm on Friday.
Sightseeing only - \$21 Lunch - \$35 Dinner - \$43

The Speed Art Museum is a recently renovated traditional art museum on the campus of the University of Louisville. Regular admission is \$12, but Sundays are free! 2035 South 3rd Street

The Waterfront Park is a wonderful park along the Ohio river running the entire length of downtown. Features include walking and running paths, bike rentals, splash park/fountains, and various events. You can also cross the river on the pedestrian bridge and explore shops in Jeffersonville, IN.



Fourth Street Live! is a fun way to spend a night out downtown. Taking up an entire block of Fourth Street, it's a stretch of restaurants, bars, shops, entertainment, and music. If you like crowds and excitement, this is the place for you. Be warned, this is a big tourist draw and prices are high.

If you've got a few days and a car, **The Kentucky Bourbon Trail** is a series of 9 bourbon distilleries in Louisville and the surrounding counties that offer public tours and information about Kentucky's bourbon history. Some breweries charge a very small admission fee, and most offer free samples. Plan at least 3 days if you want to visit all 9 locations. You must be 21+ for tastings.



LGS

The Louisville Game shop	925 Baxter Ave	(502) 456-2734
Role of the Die	2902 Bardstown Rd	(502) 409-6552
Hockeyman's	125 E Maple St, Jeffersonville, IN	(812) 285-8806
Cybertek Games	8667 Preston Hwy	(502) 919-9093
BluegrassMagic Gameshop	5629 Outer Loop	(502) 964-1170
The Destination	5031 Shelbyville Rd	(502) 883-2110
Through The Decades	9008 Taylorsville Rd	(502) 554-7222
Empire Comics & Games	1636 Slate Run Rd, New Albany, IN	(812) 948-9290
Silver Creek Game Shop	947 S Indiana Ave, Sellersburg, IN	(812) 748-9898

Thanks for coming to Louisville and remember to have
fun at the GP!
