



GRAND PRIX SHIZUOKA 2017 TRAVEL GUIDE.



Created by Akira Seno and Yoshitoki Sakai
Layout Antonio José Rodríguez Jiménez

Index

Contenido

Introduction.....	3
International Travelers Tips	3
Currency	3
Prepaid IC Cards (ICOCA/Suica)	3
No Tipping.....	3
Wi-Fi.....	4
How to Arrive to Shizuoka.....	4
From Narita Airport.	4
From Chubu International Airport.	4
Venue - Twin Messe Shizuoka.....	5
How to get to the Venue.....	5
Taxi	5
On Foot.....	5
Staff Hotel.....	6
Sun Palace Hotel	6
Food and Restaurants.....	7
Showa hormone butachika昭和ホルモンぶたちか.....	7
Sumiyaki restaurant Sawayaka 炭焼きレストランさわやか.....	7
Shizuoka Oden	8
うなぎ(Unagi)	8
お茶(O-cha)	9
Places to visit	10
Hot Spring.....	10

Introduction

International Travelers Tips

Currency

The unit of Japanese currency is yen. Coins are available in denominations of 1, 5, 10, 50, 100 and 500 yen and bank notes in denominations of 1,000, 2,000, 5,000 and 10,000 yen.



You can buy yen at foreign exchange banks and other authorized money exchangers. Almost banks in the city will close during Saturday and Sunday. At the international airports, currency exchange counters are usually open during normal office hours.

Prepaid IC Cards (ICOCA/Suica)

IC cards are rechargeable cards that can be used to conveniently pay fares on public transportation. It also can be used to make payments at a rapidly increasing number of vending machines, shops and restaurants by simply touching the card on a reader.

In Kantoh area, the most major IC card Suica has been compatible with ICOCA which Kansai area's one.

No Tipping

There is no tipping in most situation in Japan – cabs, restaurants, personal care. To tip someone is actually a little insulting; the services you've asked for are covered by the price given, so why pay more? In many cases, the service provider will decline your offer.

Wi-Fi

Getting a prepaid SIM card with local calling service is difficult in Japan. And also finding free Wi-Fi services around the city is difficult too. We suggest to rent a handy wireless router, known as “pocket Wi-Fi” at airport.

How to Arrive to Shizuoka

From Narita Airport.

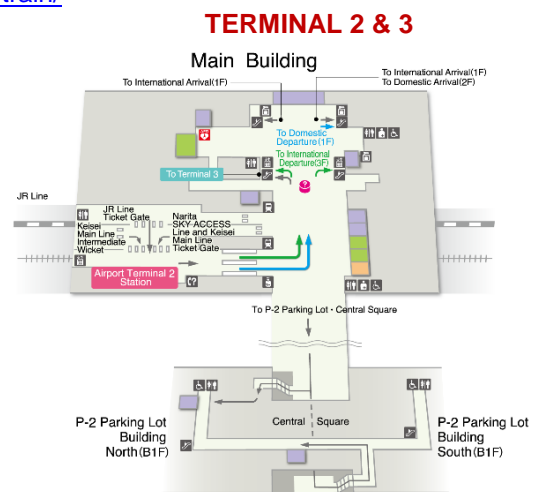
Take a Narita Express and drop at Shinagawa or Tokyo then take a Shinkansen to go west of Japan. Drop off at Shizuoka.

Prize:

- Narita Express: 3190 JPY.
- Shinkansen: 6350 JPY.

Travel Time: Approximately 2 hours.

Narita Airport Map: <http://www.narita-airport.jp/en/access/train/>



From Chubu International Airport.

Take a Myu Sky, drop off at Nagoya and transfer Shinkansen to go Tokyo, afterward drop off at Shizuoka.

Prize:

- Myu Sky: 870 JPY
- Shinkansen: 3350 JPY

Travel Time: Approximately 2 hours.

Venue - Twin Messe Shizuoka



Web: [http://www.t-](http://www.t-messe.or.jp)

[messe.or.jp](http://www.t-messe.or.jp)

Address : ツインメッセ静岡, 静岡県静岡市駿河区曲金3-1-10

3 Chome-3-1-10 Magarikane, Suruga-ku, Shizuoka-shi, Shizuoka-ken 422-8006

How to get to the Venue

Taxi

From Shizuoka Station, take a taxi at the south exit. Just show to driver venue's address. Then they will bring you to the venue. Estimated time: **7mins.**

On Foot

If you are brave enough, just follow the maps indications. (Hint of the day: use the free WiFi at the train station to charge the map on your mobile) . Estimated time: **27mins.**



Staff Hotel

Sun Palace Hotel

Address: サンパレスホテル 〒422-8067 静岡市駿河区南町11-29

422-8067 Shizuoka 11-29 Minamicho Suruga-ku

Phone: 054-282-2277

Web: <http://www.sunpalace-h.jp/access.html>

How to get there: From South exit of Shizuoka Station. Go straight from south exist, turn right at the second traffic that is next to Shizuoka Bank.



Food and Restaurants

Showa hormone butachika昭和ホルモンぶたちか

Address: 静岡県静岡市葵区紺屋町3-5 ゴールデン地下街

Web: <http://sp.raqmo.com/butachika/>



How to get there:

It is possible to go to this Japanese style bar directly through underground road from Shizuoka station. It is in very convenient place, so good for enjoy Sake with Shizuokan food, and barbecued meats especially entrails. (Hormone means entrails in Japanese slang).

Sumiyaki restaurant Sawayaka 炭焼きレストランさわやか

Charcoal-Grilled restaurant Sawayaka

Address: 炭焼きレストランさわやか 新静岡セノバ店

静岡県静岡市葵区鷹匠 1 丁目 1-1

Web: <http://www.genkotsu-hb.com/>



Sawayaka" are Restaurants who serve hamburg steaks and opened branches in Shizuoka. They are famous by a fist size hamburger steaked as rare, and it can't be served by others.

Shizuoka Oden

One of the most famous Shizuokan food is "Shizuoka Oden". Shizuoka Oden are known because their ingredients are different and unique from other Japanese region's Oden (Oden is Japanese style pot-au-feu).

青葉おでん街(Aoba Oden Gai)

Aoba Oden Street

Address: 静岡県静岡市葵区常磐町 2 丁目 3 - 6 青葉おでん街

Web: <http://shizuoka.mytabi.net/shizuoka/archives/aoba-odengai.php>



In Aoba Oden Street, there are a lot of Shizuoka Oden restaurants, so you can enjoy variety of Shizuoka Oden.

うなぎ(Unagi)

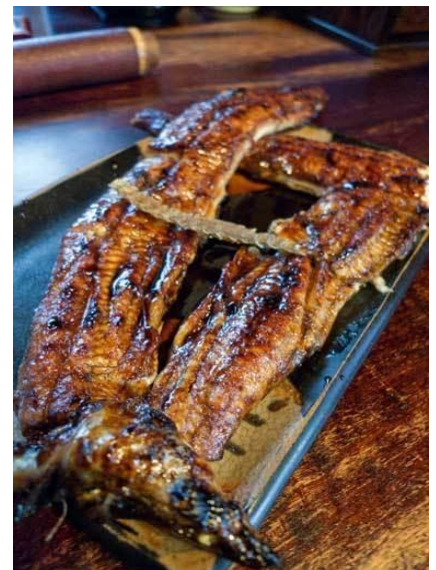
An Eel (<http://tabelog.com/shizuoka/A2201/A220101/R8213/rstLst/unagi/>)

Because Shizuoka is near the sea, Shizuoka is well known by fresh seafoods. Japanese eel is very famous. Shizuoka is near Hamamatsu-City where known as birth place of eel farming.

石橋うなぎ店(Ishibashi Unagi-ten)

Address: Nishinakahara, Suruga-ku, Shizuoka 422-8053, Shizuoka

Web: <http://tabelog.com/shizuoka/A2201/A220101/22000386/>



お茶(O-cha)

A Tea

Shizuoka is also famous as a tea producing district. Shizuoka Pref. produces almost Japanese teas. In the city, there are a lot of tea store and cafe here and there. You can enjoy the tea there, and it's good for present.

Here is list of cafe(written in Japanese): <http://tabelog.com/shizuoka/A2201/A220101/R8213/rstLst/CC06/>

喫茶 一茶(Kissa Issa)

<http://tabelog.com/shizuoka/A2201/A220101/22015142/>

It's very near Shizuoka station's north exit.

ななや 青葉通り店(Nanaya Aoba-dohri-ten)

<http://tabelog.com/shizuoka/A2201/A220101/22022216/>

It's famous by tea taste ice cream.

Places to visit

Hot Spring.

Shizuoka is known as one of the most famous hot spring area in Japan because Izu is really famous as hot springs and lots of hot springs are there at Shizuoka. I introduce hot spring where nearby Shizuoka Station since Izu is little bit far from Shizuoka Station and most people who see this travel guide, will be going to GP Shizuoka 2017 which means they are not going to Izu area. If you want to know about Izu, please contact me personally.

Kawane Onsen.

Address: 静岡県島田市川根町笹間渡 2 2 0 - 220 Kawanechō Sasamado, Shimada-shi

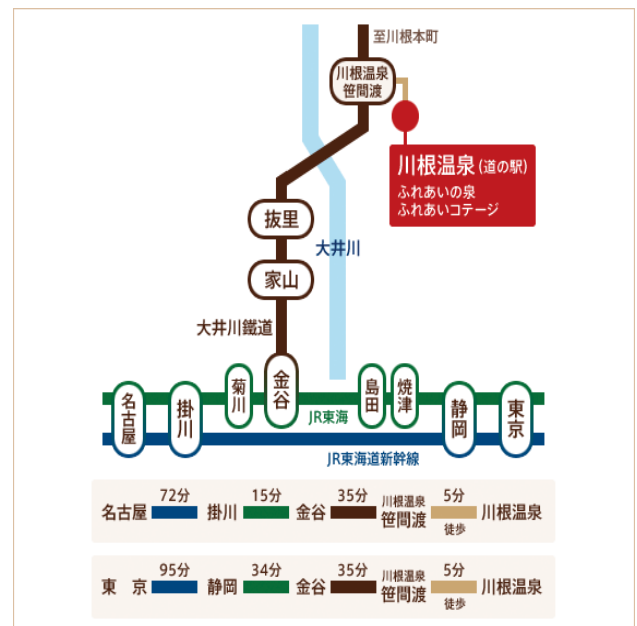
How to go from Shizuoka Station

Take JR Tokaido Line towards Hamamatsu and stops in Kanaya Station (金谷) then transfer to Oigawa Tetsudo Line towards Senzu(大井川鉄道本線-千頭行) and drop off at Kawane-Onsen-Sasamado Station(川根温泉笹間渡). Afterwards 5mins by walk as a map.

Travel Time: 1 hour 20mins

Fee: 1490yen

Map: <http://kawaneonsen.jp/about/access/index.php>



O-edo Onsen.

Address: 静岡県静岡市駿河区古宿 2 9 4 - 294 Furuyado, Suruga-ku, Shizuoka-shi

Web: <http://www.ooedoonsen.jp/sunpu/access.html>

How to go from Shizuoka Station

It is 25mins by taxi from Shizuoka Station. Just take a taxi at Shizuoka Station and show this address to driver. Fee should be not expensive since it only takes 25mins.