

MAGIC

The Gathering®

GRAND PRIX RICHMOND

Welcome to Grand Prix Richmond 2017! In this document, you'll find information on places to stay, things to do, food to eat, and how to get around. If you have any questions, there are plenty of local judges and players who love the city and will surely have recommendations.



Page 2: About Richmond/General Info

Page 3: Lodging

Page 4-5: Entertainment

Page 6: Food/Drink

If you have any questions about the city, feel free to contact Brogan King (Richmond Area Captain—broganek@gmail.com).



About Richmond/ Transportation

Richmond, Virginia is the capital of the Commonwealth of Virginia. The venue for the event is the Greater Richmond Convention Center (403 N 3rd St, Richmond, VA 23219), located in Downtown Richmond.



Arriving from Richmond International Airport:

Richmond International Airport is about 10 miles from the venue. It is a very small airport, so getting in and out is usually quick. If you are looking for cheaper flight options, BWI and IAD may be more affordable but are a substantial drive (~3 hours from Richmond). There are cabs available from the airport, as well as typical rideshare service options (Uber, Lyft, etc.). Rideshares will have a cost of around \$15-20, while a cab will likely be around \$35.

Public transit:

Public transit in Richmond is unfortunately not very reliable. There are a few buses that can take you around various locations within the city limits (schedules and routes can be found [here](#)), but there are no buses that reliably get you from the airport to the venue.

MAGIC[®] The Gathering[®] GRAND PRIX RICHMOND

Lodging

Since the venue is right downtown, there are several options very nearby, though they are a little more expensive.

The closest hotels are...

Within a block of the venue:

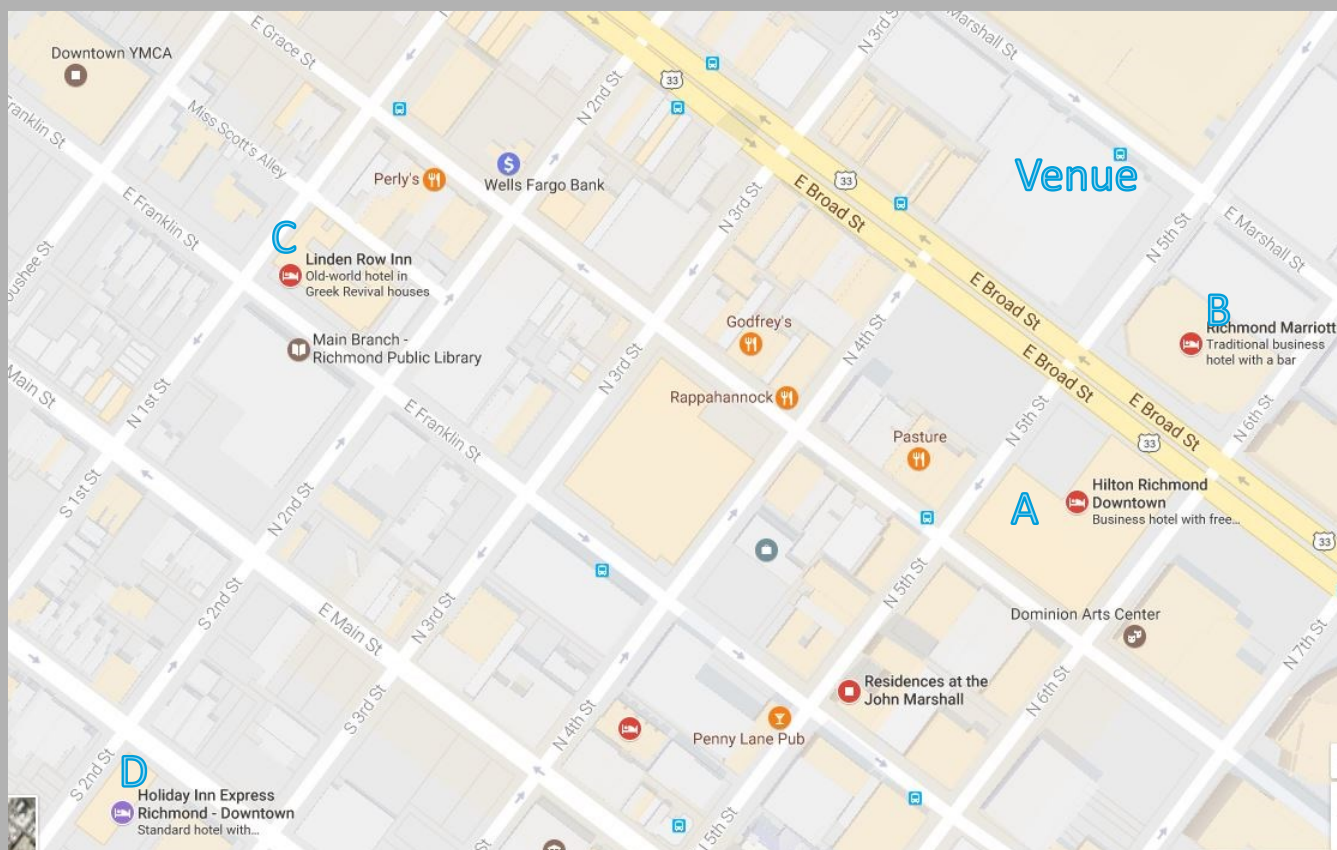
A. [Hilton Richmond Downtown](#)

B. [Richmond Marriott](#)

Slightly farther, but walkable and at a lower price point:

C. [Linden Row Inn](#)

D. [Holiday Inn Express Richmond - Downtown](#)



The cheapest hotels are located slightly outside the city near the airport. If you go to any travel site and look for hotels (Kayak, Expedia, Travelocity, etc.) there will be a variety of options. These usually run around \$50/night. While they are cheaper, you will have to travel in and out of the city.

MAGIC

The Gathering®

GRAND PRIX RICHMOND

Entertainment

Since Richmond is an old city (relative to most US cities) as well as a city that has experienced significant cultural growth over the last few years, there are several potential tourist destinations and opportunities:



[Virginia Museum of Fine Arts](#) - Awesome art, free admission, open every day



[Maymont](#) - An old Victorian estate turned park. It contains several gardens and amazing architecture



[American Civil War Museum](#)

MAGIC

The Gathering®

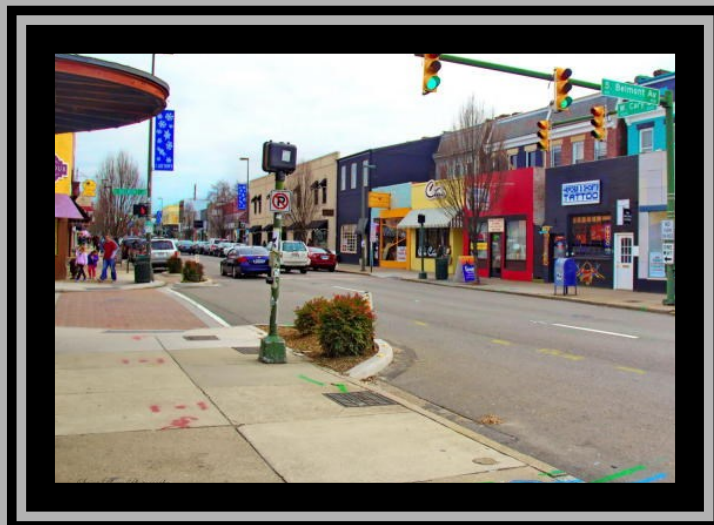
GRAND PRIX RICHMOND

More Entertainment

And a few more interesting places...



[Poe Museum](#) - Celebrates the cultural impact of author Edgar Allen Poe. Located in a very popular neighborhood (Shockoe Bottom) surrounded by food options and historic buildings



Carytown - Shopping neighborhood full of cute shops and local restaurants. (Including a local game store—[One Eyed Jacques](#).)



[Hollywood Cemetery](#) - Historic cemetery.
Walking tours available



Food/Drink

There are many reasonable food options within a few blocks of the venue:

1. Aloha Cafe	Hawaiian	10. Starbucks	Coffee, etc. (chain)
2. Saadia's Juicebox	Smoothies/salads	11. Secret Sandwich	Fancy sandwiches
3. Mama J's	Southern food	12. Pop's Market	Deli-style sandwiches/salads
4. J KOGI	Korean street food	13. Champion Brewing	Craft beer
5. Big Herm's Kitchen	Southern food (large portions)	14. Tenka Ramen	Ramen/Japanese
6. Subway	Sub sandwiches (chain)	15. Penny Lane Pub	British pub
7. Rappahanock	Seafood/oyster bar	16. K-Town	Korean
8. Wong Gonzalez	Mexican/Asian fusion	17. Perly's	Jewish deli
9. Pasture	Sandwiches/salads	* Recommended options	

