

Grand Prix Stockholm



MAGIC™
JUDGE

Table of Contents

Grand Prix Stockholm	1
Welcome to Stockholm!	1
Currency	1
Language	2
Public transport	3
SL (Storstockholms Lokaltrafik)	3
Busses	4
Metro	5
Commuter trains (Pendeltåg)	5
Taxi	6
UBER	7
Flying to Stockholm	8
Arlanda	8
From Arlanda by Commuter Train	8
From Arlanda by Taxi	8
From Arlanda by Express Train	8
Airport Coaches	9
Skavsta	9
From Skavsta by Airport Coach	9
Bromma	10
From Bromma by Airport Coach	10
The venue	11
Tourist spots	12
Old Town (Gamla Stan)	12
Djurgården	13
Vasa Museum	14
Stockholm by water	15
Fotografiska	15
Restaurant	16
Grill	16

Hermans	16
La Neta	17
Amida Kolgrill.....	17
Ai Ramen	18
Fåfångan	19
Portal	19
Bars.....	19
Omnipollos hat	20
Akkurat	20
Oliver Twist.....	21
Linje Tio	22
Local game stores	23
Dragonslair	23
Alphaspel.....	23
General information	24
Emergency number	24
Weather	24
Contact for additional information	24
Metro Map.....	25
Commuter train map	26

Welcome to Stockholm!

Stockholm, with its two million citizens is Sweden's largest city and capital. It was founded c.1250 and is built upon fourteen different islands. The city is known for its beauty, buildings, clear clean water and many parks.

Currency

The currency in Sweden is the Swedish Krona (SEK/KR). Exchange rates are roughly:

1 EUR = 10 SEK

1 USD = 9 SEK

1 GBP = 11.5 SEK



Stockholm overall is a cashless city, so only using your debit/credit card will not be an issue. Visa and Mastercard are accepted almost universally, while American express might be declined in some places.

If you want to exchange to Krona from another currency, do so before traveling into the city. As exchange offices are rare (or charge a higher rate) inside the city. ATM's are not hard to find however.

Language

According to the EPI (English Proficiency Index) Sweden is ranked second in the world (beaten only by the Netherlands) in our English proficiency. So, you do not have to be worried about people not understanding you.

Here are some common Swedish expressions if you would like to try your way with the Swedish language.

Thank you = Tack

Hello = Hallå

Good morning = God morgon

Excuse me = Ursäkta mig

One beer = En öl

Sorry = Förlåt/Ursäkta mig

As you might notice there are some weird letters in here. Namely å, ä and ö. These can be hard to pronounce and sound weird to the native English speaker.

Å. Pronounced like the au in Paul.

Ä. Pronounced like the ai in hair.

Ö. Pronounced like the u in fur or the ir in bird

Public transport

SL (Storstockholms Lokaltrafik)

Public transport – which includes buses, metro, commuter trains, trams and the ferries going out to Djurgården– are all managed by SL, the public transportation company. For traveling with SL you need a ticket. These come in three different forms: SMS (text) tickets (these are not recommended since you need your credit card registered online before using the SMS service) which you show at ticket booths or to a driver or conductor, paper tickets, which are bought from ticket machines and the plastic SL Access card, which is the travel card residents use.

Generally, the SL ticket system can appear slightly confusing to visitors (residents are also confused every now and then). We recommend you check out their website for full information. However, we urge you to take note that tickets cannot be purchased onboard any transport and failing to note this will result in a heavy fine (120 euro) if an inspector shows up and asks for your prepurchased ticket.

Once you have your tickets, the public transport system, especially the metro, works quite well and can take you wherever you want to go. After 10 pm, most services will run less often.

When traveling using public transportation, it's a good idea to plan ahead with SL's travel planner. Here you can search all ways of traveling from one address to another. If you plan to use the public transportation system, we recommend the seven-day ticket (total cost of 345 sek with the access card) or the 72-hour ticket (total cost of 250 sek, single use card or if you want it on access card 270).

Tickets can be bought at Pressbyrån (a kiosk chain that often have stores near the metro), from the station guard or from the machines located on the metro/commuter train stations.

For more information about SL, ticket prices and the travel planner visit: <http://sl.se/en/>



Busses

All busses are entered from the front door, where you either show you ticket for the driver (SMS) or scan your Access card/ticket.

The busses in Stockholm do not stop at every bus stop. To make the bus stop where you want it to, you need to press a button near you seat. There are electronic signs mounted in the ceiling showing the name of the next stop.

On each bus stop you will find departure times on small paper signs, these also details where the busses stops on their routes



Metro

The metro in Stockholm is separated into three different lines, the red line, green line and the blue line (each metro line is split into multiple tracks leading to different end stations, always make sure to check the sign on the train before getting on).

The metro runs once every five minutes during rush hour and once every fifteen minutes on normal hours. If you are traveling late during week days the metro stops running after 1AM. During weekend nights the metro runs at least once every half an hour.

To get through the turnstile, simply scan your access card on the reader and walk through (if you have a SMS, show it to the station guard and he will let you through).

On the last page of this document you will find a layout of the metro lines.

Commuter trains (Pendeltåg)

The commuter trains are the way to go if you want to travel outside of central Stockholm.

There are four commuter lines that run through Stockholm. The commuter trains function very much the same as the metro. You scan your access card on the reader and walk through the turnstile

On the last page of this document you will find a layout of the commuter train lines.

Taxi

There are several taxi services in Stockholm and they all charge a different rate for traveling. Uniting them is that this rate is fairly high compared to most other larger cities, so unless you have deep pockets, don't plan on using taxis a lot.

If you want to use a taxi the services Taxi Stockholm, Taxi Kurir, Taxi 020 or TopCab are recommended. Smaller services and individual drivers will sometimes try to name themselves very similarly and then overcharge, so make sure you step in the right car.

By Swedish law all taxis must nowadays have a sign on them stating the average price for a 10 km journey. On average a "cheap" taxi goes for less than 400 sek. Always check the sticker (usually located on the rear door window) on the taxi before getting in.



An example of a taxi sign of a shady company.

UBER

As many other larger cities in the world UBER is quite popular in Stockholm. No wonder when it is often less expensive than the normal taxi, and you get an price estimate before traveling.

To use UBER in Stockholm simply download the app on a smartphone and request a car to you.

More information on how to use UBER can be found on their website <https://www.uber.com/>

Flying to Stockholm

Arlanda

Arlanda is Sweden's largest airport and the airport we recommend that you travel to. It is located a mere 50km from the venue.

For a map over the Arlanda, visit:

<https://www.swedavia.com/arlanda/find-at-the-airport/>

From Arlanda by Commuter Train

After claiming your luggage, head towards Sky City (Arlanda shopping area, located between terminal 4 and 5). Here you will find a reception where you can buy SL tickets, and the escalators down to the commuter trains. To use the commuter train to and from Arlanda you will need to pay a small fee (125 SEK), this is payed at Sky City.

From Arlanda by Taxi

Head for the main entrance after claiming your bags. There are always several taxi cars waiting outside the airport. Make sure to check the price sticker located at the rear window of the taxi

From Arlanda by Express Train

The Arlanda express is a high-speed train that runs nonstop from Arlanda to Stockholm central station. The journey takes 20 minutes. You can buy your tickets at the airport's information desks or in the Arlanda Express self-service machines located next to the escalators/lifts leading down. There are escalators/lifts down to the train from all terminals. One way tickets are 280 sek for adults and 150 for youths up

to the age of 25, if you are a group of people traveling together they usually have a special offer of 2 persons for 350, 3 for 450 and 4 for 550.

Airport Coaches

Flygbussarna buses between Stockholm Arlanda and the Stockholm central station run every ten minutes during most of the day. The route has bus stops along the motorway and at St Eriksplan. Tickets purchased from ticket machines at the airport, online (<http://flygbussarna.se/en>), at the shops 7-eleven and Pressbyrån, and onboard the bus (but only with Visa and Mastercard Credit Cards). One way tickets cost 99 sek

Skavsta

Skavsta is the airport where Ryanair and a few other budget airlines, like Wizz Air, travel to. It's located 100km from the venue Traveling from Skavsta.

From Skavsta by Airport Coach

The easiest way to travel from Skavsta airport to Stockholm is with the airport coaches, a one-way ticket is 139 sek. This bus will take you to Stockholm Central Station, from where you can take a commuter train straight to the venue.

Tickets purchased from ticket machines in the arrival hall and at the bus stop, online (<http://flygbussarna.se/en>), and onboard the bus (but only with Visa and Mastercard Credit Cards).

Bromma

Bromma is a smaller airport that's mostly used for domestic flights. It's located in the suburb of Bromma, 16 km from the venue.

From Bromma by Airport Coach

You can travel with the Flygbussarna airport coaches between Cityterminalen in Stockholm and Bromma Stockholm Airport. The journey takes about 20 minutes and they run in line with flight arrivals and departures. You can also travel with The Flygbussarna airport coaches from Bromma Stockholm Airport to Brommaplan and from Bromma Stockholm Airport to Stockholm Arlanda Airport (via Sundbyberg and Kista).

From Bromma by public transportation

You can also take the Stockholm Public Transport (SL) local bus to and from Bromma: SL bus 110 to/from Alvik, and SL bus 152 to/from Älvsjö station (the venue) via Solna and Sundbyberg. Tickets have to be purchased in advance, see <http://sl.se/en/> for more information.

The venue

The venue for this year's Grand Prix Stockholm is once again Stockholmsmässan. Located 15 minutes with commuter train from the central station, this large convention center is easy to travel to and find.

Address: Mässvägen 1, 125 30 Älvsjö

The easiest way to travel to the venue by public transport is by far the commuter train. Simply make your way to the central station and catch any train going south to Älvsjö station (three stops). When you get off the train make your way up the stairs and exit to the left, go down the road and you are at the venue.

Alternative ways of traveling from the central station:

Take the red line to Bredäng or Fruängen. From either of these stations take the 163 bus forwards Kärrtorp, get off at Älvsjö Station.

Take the green line to Gullmarsplan, from there take the 144 bus forwards Fruängen, get off at Älvsjö Station.



Tourist spots

Old Town (Gamla Stan)

Old Town is located in the middle of Stockholm and although a tourist magnet it will provide gems for the visitors willing to walk off course and wander around.

The regally enthused will find the Royal Castle here, with the Royal Armory sporting a great collection of historic armor, weapons and other artefacts. Old Town is also a great spot if you enjoy seeing old architecture, churches or just want to enjoy a relaxing stroll and some ice cream.

To get to the Old town, simply take the metro on the red or green line and get off at the Gamla Stan station, then follow the signs inside the metro station until you exit near the edge of Old town.



Djurgården

Djurgården is an island and a district of Stockholm known for its many tourist attractions and beautiful nature. Here you will find The Vasa Museum, Gröna Lund (Stockholms tivoli), Skansen, The Abba museum, Junibacken and much more.

The name Djurgården comes from its old name, den Kungliga Djurgården; which translates into the royal game park. The official name of the island is Valdemarsön (named after king Valdemar), but after king John III made it his game park, the name Djurgården has stuck around. So much that more people know it by the name Djurgården.

For more information visit: <http://royaldjurgarden.se/>



Vasa Museum

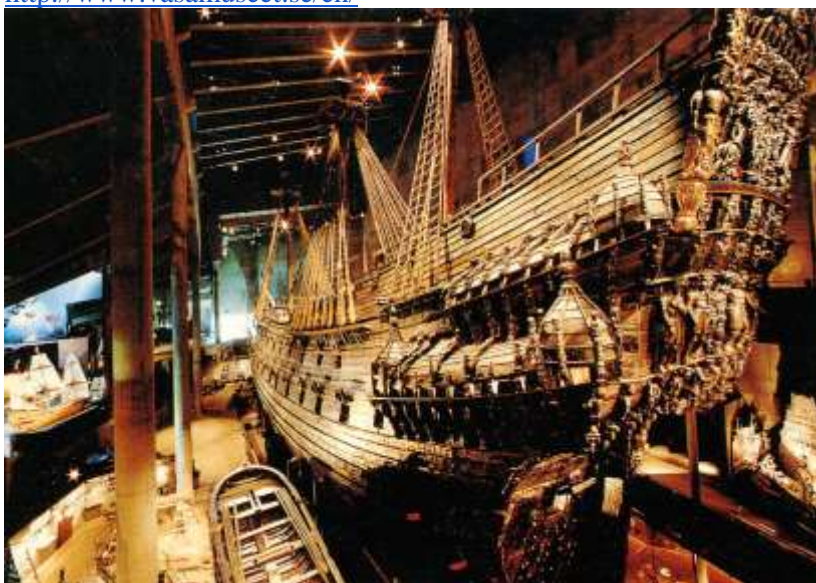
The great warship Vasa was built by the orders of King Gustav II Adolf in 1626. It was to be one of the greatest warships ever built, hosting over 60 cannons and 400 crew members. During its maiden voyage the 28 of august 1628 the ship capsized and sank after sailing a mere 1300 meters.

In 1961 after years of underwater excavation work, Vasa was once again brought above water. Nowadays you can find the Vasa ship in its own museum located on Djurgården.

Natives in Stockholm tend to overlook this spot, but visitors are generally very positive.

For more information and opening hours, visit:

<http://www.vasamuseet.se/en/>



Stockholm by water

Stockholm is a city defined by its relation to Mälaren and the Baltic Sea. The waterways are a great way to experience Stockholm. There are guide tourist boats, but we recommend renting a kayak to paddle your way around Stockholm.

www.langholmenkajak.se

www.kajakkompaniet.se

www.raliakajak.se

Fotografiska

Fotografiska is one of the world's largest meeting places for contemporary photography. The museums also has a good restaurant that serves plant based cuisine and a great brunch.

www.fotografiska.se



Restaurant

Here are some recommendations of restaurants to visit when in Stockholm.

Grill

Located near Drottninggatan in central Stockholm, this restaurant is as its name suggest famous for its grilled meat. It is often full so it is a good idea to book a table if you are interested in eating here. The price for a two-person meal (Two steaks and a bottle of wine) is often over 100 euro's, so if your budget is tight, this is not the place to eat.



Price range: 50 - 100€

<http://grill.se/en/>

Hermans

A cozy place with a great view. They serve a 100% vegetarian buffé.

Price range: 14€ for lunch buffé and 26€ for dinner.

<https://hermans.se>



La Neta



One of our favorite places to get tacos. As close you can get to Mexican street food in Stockholm. They got two locations, one Close to the Central station and one near

Medborgarplatsen. No reservations. Can be quite crowded during lunch hours on weekdays.

Price range: smaller dishes for 3-5 € each.

<http://laneta.se/>

Amida Kolgrill

This innocuous charcoal grill is mentioned by some of Stockholms star chefs as a place they like visit to unwind with some simple grilled goodness.

Price range: 10-16€

<http://amida.se/>



Ai Ramen

Ai Ramen is the first ramen bar in Stockholm that crafts their own noodles. They recently received an award as one of the best budget restaurants in Stockholm. They don't take any reservations for tables.

Price Range: 15 - 30€

<http://www.airamen.se>



Fåfängen

Welcome to one of the best views in Stockholm. Located on the heights of Södermalm with a wonderful view of Saltsjön and Djurgården this restaurant and café is a great spot to grab some ice cream or a glass of wine.

They also serve classic Swedish cuisine and you can book a table for brunch on weekends.



Price range: 20 - 50€

<http://fafangen.se/>

Portal

This restaurant is run by Klas Lindberg, a chef who has won awards as Swedish chef of the year and being responsible for the Nobeldinner. Here at Portal he serves simple Nordic cuisine made from great products.

Price range: 25-40€

<http://portalrestaurant.se/>



Bars

Some bars that we can recommend, some for the cocktail lovers, some for the beer enthusiast.

Omnipollos hat

Omnipollo is a Swedish brewery that has gained international acclaim for their collaborations and willingness to experiment. This is the brewery's own bar, they have 10 taps with lots of interesting beers on rotation. If you're a beer nerd who likes to try something new this is the place to be. They also have a woodfired pizza oven that produces some of the best pizzas in Stockholm.



<http://www.omnipolloshatt.com/>

Akkurat

If you like beer, this is the place to be. This bar is famous for its large selection of beer and whiskey, and a must visit if you enjoy an expensive beer.

<http://www.akkurat.se/>



Oliver Twist

A bar that specializes in beer, and mostly American beer but they also have lots of beer from Swedish microbreweries. With 25 taps, 3 of which are hand pumped real ale, and a large assortment of bottles the very knowledgeable bartenders will be happy to help you find just the beer for you.

<http://olivertwist.se/en/>



Linje Tio

If you're more into cocktails this is the place for you. This bar, named after the old tramline that had its final stop at Hornstull, has placed on the list “The worlds 50 best bars” for 3 years running.

<http://linjetio.com>



Local game stores

Dragonslair

Kungsholmstorg 8
112 21 Stockholm
Sveavägen 118

Located a mere five minutes from the Central station, this is Stockholm's central hub for MTG related activities. Open since 2004, the store has become one of Sweden's largest retailer of board games, and with its 350 square meters you have a hard time not finding things to do here. There are Magic events every evening except weekends (unless there are larger tournaments planned).

This spring Dragons lair opened a second store on Sveavägen that's primarily focused on board games.

Alphaspel

Sparbanksvägen 14
129 32 Hägersten

Located near Hägerstensåsen's metro station (on the red line), Alphaspel is the place go if you want Warhammer, board games or role-playing supplies. The shop has been open for seven years and sells everything from chess boards to MTG cards.

General information

Emergency number

In the event of an emergency, call the European emergency number (112).

Weather

The weather in Sweden can be quite volatile. During this summers it has reached temperatures as high as 35 degrees with sun, but as September comes around it just as likely to be 11 degrees with rain. We strongly recommend that you pack a wind/rain proof jacket. And that you check the weather report before traveling.

Contact for additional information

Kevin Moore
Email: moorekevinw@gmail.com
Cell Phone: 0046734448975

Alexander Johansson
Email: Alexanderjn@live.se
Cell Phone: 0046708660454

Jacob Malmström
Email: jacobmalmstrom@gmail.com
Cell Phone: 0046704972285

Metro Map



Commuter train map

