

GP Lyon - May 8-9, 2010



Travel Information : by plane

- Lyon-Saint Exupéry airport is located 25km east of Lyon.
- The SATOBUS shuttles connect the airport to Lyon's main station Lyon Part-Dieu. Connections to downtown Lyon depart every 20 minutes between 5 a.m. and 11:20 p.m.
- www.lyon.aeroport.fr
- www.satobus.com



Travel Information : by train

- The two main stations are Lyon Part-Dieu and Lyon-Perrache.
- The Lyon Convention Centre is 10 minutes from Part-Dieu TGV station, with Cristalis bus C1.
- http://www.tcl.fr/document/s/pdf/premier_contact.pdf



Travel Information : by car

- Right at the city centre's north-east entrance, next to the motorway network and northern orbital road, Porte de Saint Clair exit, direction Cité internationale.
- <http://www.ccc-lyon.com/acs/servlet/getBin?name=BEE340715D08921A9444B3127D57ECB01168954609812.pdf>



Cité Internationale

- Lyon Convention Centre is part of the « Cité Internationale » : a multi-functional project deftly balancing nature, business, culture and communication.
- <http://www.cite-internationale-lyon.fr/>



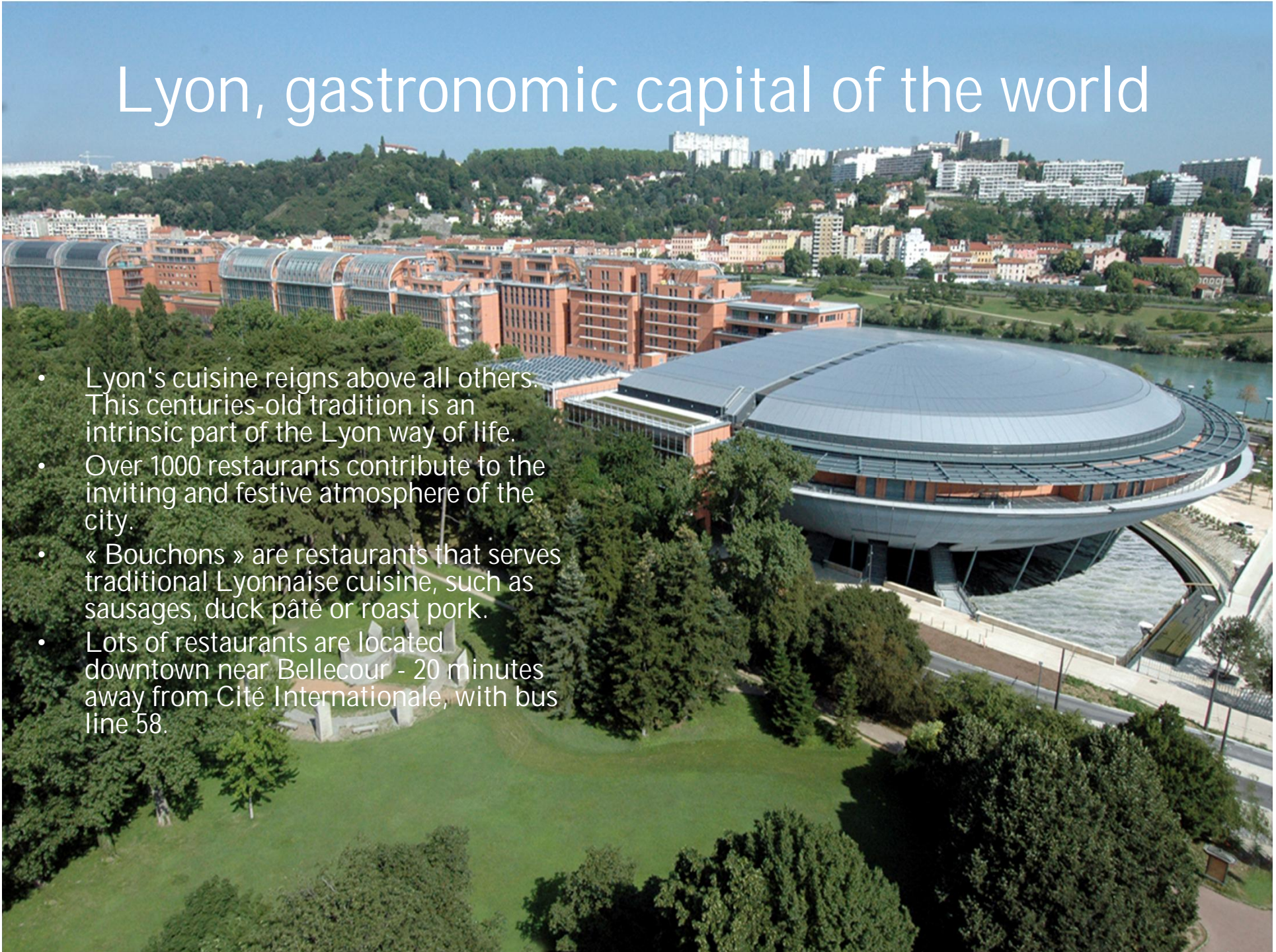
Parc de la Tête d'Or

- Parc de la Tête d'Or is the largest urban park in France. Located next to the Cité Internationale, it features a large lake on which boating takes place during the summer months.
- There is a small zoo, with giraffes, elephants, tigers and other animals. There is also a Botanical garden.
- <http://www.loisirs-parcdelatetedor.com/>



Lyon, gastronomic capital of the world

- Lyon's cuisine reigns above all others. This centuries-old tradition is an intrinsic part of the Lyon way of life.
- Over 1000 restaurants contribute to the inviting and festive atmosphere of the city.
- « Bouchons » are restaurants that serves traditional Lyonnaise cuisine, such as sausages, duck pâté or roast pork.
- Lots of restaurants are located downtown near Bellecour - 20 minutes away from Cité Internationale, with bus line 58.



Rue mercière

- You can't come to Lyon without going to Rue Mercière, a street with a large number of restaurants, including many bouchons and bars. It's a very popular quarter for tourists.
- Rue Mercière is located next to Place Bellecour.

